

# The Effects of COVID-19 Vaccines on Economic Activity\*

Pragyan Deb  
IMF

Davide  
Furceri<sup>∞</sup>  
IMF

Daniel  
Jimenez  
IMF

Siddharth  
Kothari  
IMF

Jonathan D.  
Ostry  
IMF and CEPR

Nour Tawk  
IMF

## Abstract

This paper empirically examines the economic effects of COVID-19 vaccine rollouts using a cross-country daily database of vaccinations and high frequency indicators of economic activity—nitrogen dioxide (NO<sub>2</sub>) emissions, carbon monoxide (CO) emissions, and Google mobility indices—for a sample of 46 countries over the period December 16, 2020 to June 20, 2021. Using surprises in vaccines administered, we find that an unexpected increase in vaccination per capita is associated with a significant increase in economic activity. We also find evidence for non-linear effects of vaccines, with the marginal economic benefits being larger when vaccination rates are higher. Country-specific conditions play an important role, with lower economic gains if strict containment measures are in place or if the country is experiencing a severe outbreak. Finally, the results provide evidence of spillovers across borders, highlighting the importance of equitable access to vaccines across nations.

**Keywords:** COVID-19; pandemics; vaccinations; containment measures.

**JEL codes:** C31; C33; E65; O50; F4.

---

\* All authors: International Monetary Fund, Washington DC, 20431, USA. Deb: [pdeb@imf.org](mailto:pdeb@imf.org); Furceri: [dfurceri@imf.org](mailto:dfurceri@imf.org); Jimenez: [djimenez@imf.org](mailto:djimenez@imf.org); Kothari: [skothari@imf.org](mailto:skothari@imf.org); Ostry: [jostry@imf.org](mailto:jostry@imf.org); Tawk: [ntawk@imf.org](mailto:ntawk@imf.org). The views expressed in this paper are those of the authors and do not necessarily represent those of the IMF or its member countries.

<sup>∞</sup> Corresponding author.

1  
2  
3  
4 **I. Introduction**  
5

6  
7 Since the beginning of the COVID-19 pandemic countries have been forced to put in  
8 place stringent non-pharmaceutical interventions (henceforth referred to as containment  
9 measures) in order to limit the spread of the virus. But these containment measures have come at  
10 enormous economic costs, resulting in unprecedented economic losses (Carvalho et al. 2020;  
11 Coibion, Gorodnichenko and Weber, 2020; Deb et al., 2020b; IMF, 2020a, b), despite wide-scale  
12 fiscal measures launched worldwide to mitigate some of these losses (Deb et al., 2021d). With  
13 the advent of vaccines, the focus of countries has shifted towards vaccinating their populations  
14 against the Coronavirus (SARS-nCoV-2) as quickly as possible, in an effort to raise immunity  
15 against the virus and ease containment measures, thereby helping their economies recover.  
16  
17  
18  
19  
20  
21  
22  
23  
24  
25  
26  
27  
28  
29

30 Evidence from the epidemiological literature has already established the effectiveness of  
31 COVID-19 vaccines in reducing virus transmission, curbing severe infections and  
32 hospitalizations, and lowering fatalities (Dagan et al. 2021, Polack et al. 2020, Voysey et al.  
33 2020). However, with wide access to vaccines having only picked up since early 2021, there is  
34 thus far little empirical evidence on the effects of vaccine rollouts on economic activity in a  
35 cross-country setting (see for example, Deb et al 2021b for an analysis based on regional data for  
36 a more limited set of countries). In this context, this paper complements our analysis of the  
37 health impact of vaccinations (Deb et. al. 2021a), by providing an empirical assessment of the  
38 effects of COVID-19 vaccinations on high-frequency proxies of economic activity for a sample  
39 of 46 countries over the period December 16, 2020 to June 20, 2021. It then goes on to study  
40 potential non-linearity in the economic effect of vaccines, including depending on the initial rate  
41 of vaccination and other country-specific conditions, such as the stringency of containment  
42 measures or the severity of the COVID-19 outbreak. Finally, the paper examines how  
43  
44  
45  
46  
47  
48  
49  
50  
51  
52  
53  
54  
55  
56  
57  
58  
59  
60  
61  
62  
63  
64  
65

1  
2  
3  
4 vaccinations and new COVID-19 cases in a country's main trading partners can affect its local  
5  
6 economic activity through economic inter-linkages.  
7  
8

9  
10 For this purpose, we assemble a daily database on high-frequency indicators of economic  
11  
12 activity—nitrogen dioxide (NO<sub>2</sub>) emissions, carbon monoxide (CO) emissions, and Google  
13  
14 mobility indices. We use NO<sub>2</sub> emissions as our baseline measure for economic activity as it is  
15  
16 most highly correlated with lower frequency measures of economic activity like industrial  
17  
18 production and PMI indices. Economic activity data is combined with daily data on COVID-19  
19  
20 vaccines administered per capita (one or two doses), confirmed COVID-19 infections and  
21  
22 containment measures. We rely on high frequency identification to establish causality,  
23  
24 controlling for lagged effects of economic and health variables, and accounting for expectations  
25  
26 about the country-specific evolution of the pandemic using a set of controls that can affect future  
27  
28 infections and economic activity—non-pharmaceutical interventions (NPIs) such as containment  
29  
30 measures, enhanced testing, contact tracing and public information campaigns aimed at  
31  
32 increasing social awareness—and country-specific time trends. To further identify the causal link  
33  
34 between COVID-19 vaccines and economic activity, we construct a novel measure of surprises  
35  
36 in vaccines administered. The variable is computed by taking the difference between the share of  
37  
38 population that is fully vaccinated and the predicted share that is expected to be fully vaccinated  
39  
40 (see data section) based on production and procurement of vaccines.  
41  
42  
43  
44  
45  
46  
47  
48

49 We find that surprises in vaccinations have significant economic effects: a 10 percent of  
50  
51 population (unexpected) increase in vaccine is associated with an increase in daily per capita  
52  
53 NO<sub>2</sub> emissions of about 0.3 standard deviation (an increase of almost 30 percent relative to its  
54  
55 median). To better put this result in perspective, this is broadly equivalent to going from a full  
56  
57 lockdown (stringency index of 1) to containment measures equivalent to a stringency level of  
58  
59  
60  
61  
62  
63  
64  
65

1  
2  
3  
4 0.5. This comparison, however, likely underestimates the economic gains from higher  
5  
6 vaccination rates as we find evidence for non-linear effects of vaccines, with the marginal  
7  
8 economic benefits being larger when vaccination rates are higher. Similar positive effects are  
9  
10 obtained for the impact of vaccinations on mobility indicators and CO (which is only significant  
11  
12 with a lag).  
13  
14

15  
16  
17 In addition, we find that country-specific conditions play an important role in  
18  
19 determining the economic impact of vaccines. Economic gains are lower if strict containment  
20  
21 measures are in place, as they constrain economic activity even with vaccinations picking up.  
22  
23 Similarly, economic gains are lower if the country is experiencing a severe outbreak during the  
24  
25 vaccine rollout as people continue to voluntarily socially distance till cases come down  
26  
27 significantly.  
28  
29  
30

31  
32  
33 Finally, we find evidence of spillovers across borders: an increase in COVID-19 cases in  
34  
35 trading partner countries results in a slowdown in domestic economic activity due to spillovers  
36  
37 from trade. Furthermore, an increase in COVID-19 vaccinations in the main trading partner  
38  
39 countries has a positive and statistically significant effect on domestic economic activity. These  
40  
41 results highlight the importance of equitable and speedy access to vaccines across nations, as  
42  
43 higher vaccination rates in trading partners not only improves health outcomes in partners (Deb  
44  
45 et al., 2021a), but is also likely to improve economic conditions domestically.  
46  
47  
48

49  
50 Our paper contributes to two main strands in the literature. The first is that which studies  
51  
52 the economic effects of COVID-19 vaccines and remains somewhat limited. Sandmann et al.  
53  
54 (2021) examine the potential health and economic value of COVID-19 vaccinations in the UK  
55  
56 and find that introducing vaccinations leads to a reduction in community transmission and  
57  
58 incremental monetary gains from a health-care perspective. Deb et al. (2021b) employ a regional  
59  
60  
61  
62  
63  
64  
65

1  
2  
3  
4 database of 17 countries (326 states) to study the impact of COVID-19 vaccinations on economic  
5  
6 activity proxies—Night-time lights, Aerosol Optical Depth (AOD) emissions, and mobility.  
7  
8 They find that vaccine deployment has persistent positive effects on the level of economic  
9  
10 activity. Agarwal and Gopinath (2021) propose a cost-benefit analysis for an expedited rollout of  
11  
12 vaccines in an equitable manner across all countries, and find that while vaccinating 40 percent  
13  
14 of the world’s population by 2021 could cost around \$50 billion, its engendered benefits could  
15  
16 reach about \$9 trillion in economic gains. This paper contributes to this literature by: (i)  
17  
18 extending on Deb et al. (2021b) to examine the effects of surprises in vaccines administered on  
19  
20 economic activity for 43 countries; (ii) studying the role of country-specific conditions in  
21  
22 amplifying/dampening the effects of vaccine surprises; and (iii) examining the impact of  
23  
24 COVID-19 cases and vaccines in main trading partners on a country’s own economic activity  
25  
26 levels.  
27  
28  
29  
30  
31  
32  
33

34 This paper also contributes to the literature which uses high-frequency indicators to proxy  
35  
36 economic activity. Fernández-Villaverde and Jones (2020) and Sampi and Jooste (2020)  
37  
38 establish that Google mobility data is an adequate proxy for economic activity by finding a high  
39  
40 correlation between GDP and mobility data. Chen et al. (2020) and Deb et al. (2020) use Google  
41  
42 mobility indicators to capture the economic impact of the COVID-19 pandemic. Lin and  
43  
44 McElroy (2011) show that variation in NO<sub>2</sub> emissions in China resemble its GDP growth during  
45  
46 and after the Global Financial Crisis. Deb et al. (2020b) quantify the economic costs of the  
47  
48 COVID-19 pandemic using Nitrogen Dioxide (NO<sub>2</sub>) emissions and estimate losses in NO<sub>2</sub>  
49  
50 emissions 30 days after the implementation of containment measures to be equivalent to about a  
51  
52 15 percent loss in industrial production. This paper contributes to this strand of the literature by  
53  
54 putting together a novel database of daily high-frequency indicators of NO<sub>2</sub> emissions, CO  
55  
56  
57  
58  
59  
60  
61  
62  
63  
64  
65

1  
2  
3  
4 emissions, and Google mobility indicators for 43 countries, to examine how they are affected by  
5  
6 surprises in vaccines administered.  
7  
8

9  
10 The paper is structured as follows. Section II describes the data and Section III the  
11  
12 methodological approach. Section IV discusses the results on effects of vaccinations on  
13  
14 economic outcomes, the role of country-specific factors, and the effects of COVID-19 cases and  
15  
16 vaccines in main trading partners on a country's own economic activity. The last section  
17  
18 concludes.  
19  
20  
21  
22  
23

## 24 25 26 **II. Data**

27  
28 Our empirical analysis relies on a comprehensive country-level database of daily  
29  
30 COVID-19 cases and vaccinations, high-frequency proxies of economic activity (NO<sub>2</sub>, CO, and  
31  
32 mobility), and government responses to the pandemic in the form of different non-  
33  
34 pharmaceutical interventions. Annex Table 1 provides a summary of the data used.  
35  
36  
37  
38

### 39 **COVID-19 related variables**

40  
41  
42 COVID-19 vaccines data are sourced from the Our World in Data COVID-19 repository.<sup>1</sup>  
43

44  
45 Vaccines data is disaggregated by first and second shots, with data covering up to 202 countries  
46  
47 starting in December 2020.  
48  
49  
50  
51  
52  
53  
54  
55  
56  
57  
58

---

59 <sup>1</sup> <https://covid.ourworldindata.org/>  
60  
61  
62  
63  
64  
65

1  
2  
3  
4 COVID-19 cases: Daily data on COVID-19 cases is collected from the COVID-19 Data  
5  
6  
7 Repository by the Center for Systems Science and Engineering (CSSE) at Johns Hopkins  
8  
9 University.<sup>2</sup> Coverage begins from January 22, 2020 for 208 countries.

10  
11  
12 Expected vaccinations: Data on expected vaccination rollout is taken from Airfinity, a science  
13  
14 information and analytics company.<sup>3</sup> Airfinity uses a supply-driven model to construct country  
15  
16 level daily time-series for the number of people expected to be fully vaccinated. Their model  
17  
18 tracks vaccine production facilities and links supply from each facility to actual and expected  
19  
20 deliveries to each country, including through international sharing arrangement like the COVAX  
21  
22 facility. Based on actual/expected deliveries, Airfinity produces a time-series for people expected  
23  
24 to be fully vaccinated, allowing for different speeds of vaccine rollout depending on the income  
25  
26 level of the country. In addition, while their model predicts the expected number of people fully  
27  
28 vaccinated, it takes into account country specific policies, such as greater emphasis on first doses  
29  
30 in some countries like Canada, Finland or the UK.  
31  
32  
33

34  
35  
36  
37 Vaccine surprise: We construct a novel measure of vaccine surprises by taking the difference  
38  
39 between actual vaccination rates (percent of population fully vaccinated) in the data and  
40  
41 expected vaccination rates. The vaccine surprise variable has two key advantages over simply  
42  
43 using vaccination rates in our empirical analysis. Economic activity is more likely to increase  
44  
45 following surprises in vaccination rates rather than to actual vaccination rates in the population  
46  
47 (after controlling for number of cases) as economic agents will likely internalize expected  
48  
49 vaccine rollouts. In other words, if future vaccine rollouts are anticipated, using actual  
50  
51 vaccination rates would lead to underestimating the economic effect of vaccines (for a similar  
52  
53  
54  
55  
56  
57  
58

---

59 <sup>2</sup> <https://github.com/CSSEGISandData/COVID-19>

60 <sup>3</sup> <https://www.airfinity.com/>

1  
2  
3  
4 argument, related to fiscal policy actions see Ramey 2011). In addition, surprises in vaccination  
5  
6 are less likely to be endogenous to economic developments and COVID-19 trends, as well as  
7  
8 other shocks affecting vaccine supply, allowing for better causal identification.  
9

10  
11 To check that indeed our vaccine surprise variable can be deemed as exogenous, we  
12  
13 analyze the relationship between the vaccine surprise and other variables affecting high  
14  
15 frequency indicators of economic activity.<sup>4</sup> The results reported in Annex Table 2 show that the  
16  
17 vaccine surprise variable is uncorrelated with daily contemporaneous developments related to the  
18  
19 pandemic (new cases and stringency of containment measures), the procurement of vaccines, as  
20  
21 well as lags of our high frequency measures of economic activity (NO<sub>2</sub>, CO, mobility discussed  
22  
23 below).  
24  
25  
26  
27  
28  
29

30 Finally, we looked at the time series of vaccine surprises as well as their distribution  
31  
32 across countries. Figure 1 shows the box plot for the vaccine surprise variable for advanced  
33  
34 economies as well as emerging and developing economies. The median vaccine surprise is close  
35  
36 to zero for both groups, although the distribution is skewed with larger negative surprises  
37  
38 indicating, consistent with anecdotal evidence, slower than expected vaccine rollout. Figure 2  
39  
40 shows the time series for the vaccine surprise variable for a few specific countries. The US has  
41  
42 had relatively small surprises, with vaccinations lagging model predictions till April, but a  
43  
44 subsequent pickup in rollout resulting in actual vaccination rates catching up to model  
45  
46 predictions. By contrast, vaccine rollout has consistently underperformed model predictions in  
47  
48 India and overperformed model predictions in Israel.  
49  
50  
51  
52  
53  
54  
55  
56  
57

---

58 <sup>4</sup> All regressions control for country and time fixed effects, and standard errors are clustered at the country level.  
59 The significance of the results remain unchanged if estimated using Driscoll-Kraay standard errors that allow for  
60 more general cross-sectional and temporal dependence.  
61  
62  
63  
64  
65



## Economic Activity Variables

Emissions Data: Following Deb et. al. 2020b, we use emissions as a proxy for economic activity.

We gather nitrogen dioxide (NO<sub>2</sub>) and carbon monoxide (CO) emissions data at a daily frequency from The World Air Quality Index project, a non-profit project whose mission is to provide a unified world-wide air quality information.<sup>5</sup> Our sample covers 64 countries for NO<sub>2</sub> and 59 countries for CO starting on January 1<sup>st</sup>, 2021. The data is reported using EPA standards and is based on the median emissions reported by city-specific stations which are updated three times a day.

Mobility: We collect retail and recreation mobility data from Google Mobility Community Reports, which have been shown to be a good proxy for economic activity (IMF, 2020a).<sup>6</sup> The reports provide country-level daily data by country and highlight the percent change in visits to places related to retail and recreation activity (e.g. restaurants, cafes, shopping centers, movie theaters, museums, and libraries). The data is reported as the change relative to a pre-pandemic baseline value for that corresponding day of the week, said baseline is calculated as the median value for that corresponding day of the week, during the five-week period between January 3<sup>rd</sup> and February 6<sup>th</sup>, 2020. Daily data are available for 135 countries in our dataset, with coverage beginning from February 15<sup>th</sup>, 2020.

While the daily indicators used for the analysis do not capture every aspect of economic activity, they are strongly correlated with more traditional, monthly measures of economic activity such as industrial production (IP), Purchasing Managers Index (PMI) and OECDs Composite Leading Indicator (CLI). Table 1 shows a statistically significant relationship using a

---

<sup>5</sup> <http://waqi.info/>

<sup>6</sup> <https://www.google.com/covid19/mobility/index.html>

1  
2  
3  
4 monthly database of indicators from January 2019 to June 2021. We find that an increase in all 3  
5  
6 indicators is associated with a corresponding pickup in the average level of NO<sub>2</sub> emissions  
7  
8 during the estimation period. The results for CO emissions and mobility also go in the same  
9  
10 direction but are statistically weaker, suggesting that NO<sub>2</sub> is a more robust proxy of economic  
11  
12 activity.  
13  
14

15  
16  
17 We further establish that NO<sub>2</sub> emissions are also strongly associated with the level of  
18  
19 economic activity over a longer horizon. Using data available from the OECD database for total  
20  
21 man-made emissions of nitrogen oxides from 1990–2018, we test the sensitivity of such  
22  
23 emissions to conventional measures of economic activity such as GDP growth, growth in  
24  
25 manufacturing value added and growth in measures of industrial production. Table 2 shows a  
26  
27 robust relationship between these economic variables and NO<sub>2</sub> emissions.  
28  
29  
30

31  
32 Summarizing, the results in Tables 1-2 validate our choice of NO<sub>2</sub> emissions as the main  
33  
34 proxy of interest for the empirical work in this paper.  
35  
36

### 37 38 **Government Responses**

39  
40  
41 Containment measures: We use data from Oxford’s COVID-19 Government Response Tracker  
42  
43 (OxCGRT).<sup>7</sup> OxCGRT collects information on government policy responses across eight  
44  
45 dimensions, namely: (i) school closures; (ii) workplace closures; (iii) public event cancellations;  
46  
47 (iv) gathering restrictions; (v) public transportation closures; (vi) stay-at-home orders; (vii)  
48  
49 restrictions on internal movement; and (viii) international travel bans. The database scores the  
50  
51 stringency of each measure ordinally, for example, depending on whether the measure is a  
52  
53 recommendation or a requirement and whether it is targeted or nation-wide. We normalize each  
54  
55  
56  
57  
58  
59

---

60 <sup>7</sup> <https://covidtracker.bsg.ox.ac.uk/>  
61  
62  
63  
64  
65

1  
2  
3  
4 measure to range between 0 and 1 to make them comparable. In addition, we compute and  
5  
6 aggregate a Stringency Index as the average of the sub-indices, again normalized to range  
7  
8 between 0 and 1. The data starts on January 1, 2020 and cover 151 countries/regions.  
9

### 10 11 **III. Methodology**

12  
13  
14  
15 We conduct three distinct exercises to study: (i) the impact of vaccines on economic  
16  
17 outcomes; (ii) the heterogeneity in the impact of vaccines depending on country conditions; and  
18  
19 (iii) the effects from increased COVID-19 infections in main trading partners on economic  
20  
21 activity.  
22  
23

#### 24 25 **A. Effect of vaccinations on economic outcomes**

26  
27  
28 For the analysis of the economic impact of vaccinations, we use our country-time panel  
29  
30 dataset at the daily frequency that allows for high frequency identification of the impact of  
31  
32 vaccinations on economic outcomes. Establishing causality is difficult because vaccine rollout  
33  
34 may depend on current or expected economic conditions, either directly or through the evolution  
35  
36 of the pandemic which in turn impacts economic activity. We try to mitigate reverse causality by  
37  
38 controlling for lagged values of number of COVID-19 cases as well as lagged values of our high  
39  
40 frequency economic indicators. We also control for country fixed effects which effectively  
41  
42 control for vaccine procurement, structural factors (such as health capacity) affecting the speed  
43  
44 of vaccine rollout, and for differences of the structure economic activity across countries—such  
45  
46 as the share services or tourism. To further account for expectations about country-specific  
47  
48 evolution of vaccine rollout and economic activity, we also control for a set of variables which  
49  
50 may affect future infections and economic activity such as non-pharmaceutical interventions  
51  
52  
53  
54  
55  
56  
57  
58  
59  
60  
61  
62  
63  
64  
65

1  
2  
3  
4 (NPIs)—including containment measures—and country-specific time trends.<sup>8</sup> We include time  
5  
6 fixed effects to account for global factors affecting the evolution of the virus (such as new  
7  
8 variants), vaccination (supply disruptions) and economic activity (global shifts in confidence).  
9

10  
11  
12 As a first step, we use an econometric specification as follows:  
13

$$\Delta Y_{i,t} = \mu_i + \gamma_t + \beta V_{i,t-l} + \theta X_{i,t-l} + \varepsilon_{i,t} \quad (1)$$

14  
15  
16  
17  
18

19 where  $Y_{i,t}$  alternatively denotes: the level of NO<sub>2</sub> emissions as a share of the population,  
20  
21 the level of CO emissions as a share of the population, and Google’s retail mobility indicator, of  
22  
23 country  $i$  at time  $t$ .  $V_{i,t-l}$  denotes the share of the individuals in the population which have been  
24  
25 vaccinated. The coefficient  $\beta$  gives us the impact of higher vaccination rates on various  
26  
27 economic variables. We include country and time fixed effects ( $\mu_i$  and  $\gamma_t$ ) to control for  
28  
29 country-specific characteristics and global trends that can affect the evolution of the pandemic.  
30  
31 We also include a vector of control variables,  $X_{i,t-l}$ , which comprises of the lagged level of  
32  
33 COVID-19 cases, the lagged levels of NO<sub>2</sub> emissions, CO emissions, mobility, and stringency of  
34  
35 containment measures, as well as country-specific time trends. We opt for a one-day lags as a  
36  
37 baseline to reduce the risk of reverse causality but examine various lags as a robustness check.  
38  
39  
40  
41  
42

43  
44 We also explore non-linear effects of vaccines by adding the square of  $V_{i,t-l}$  in some  
45  
46 specifications.  
47  
48  
49

50  
51 Despite the extensive set of controls used in equation (1), residual concerns about  
52  
53 endogeneity may remain. To further address this issue, we construct a novel measure of vaccine  
54  
55  
56  
57

---

58  
59 <sup>8</sup> It can be argued that controlling for NPIs may bias the results downwards if NPIs are affected by vaccinations.  
60 While we are primarily interested in the partial effect of vaccinations after controlling for NPIs, our results continue  
61 to hold if we exclude NPIs as control.  
62  
63  
64  
65

surprises that accounts for expected rollout given procurement and use this as the independent variable instead of actual vaccination rates. We test the impact of unexpected vaccinations by modifying the econometric specification as follows:

$$\Delta Y_{i,t} = \mu_i + \gamma_t + \beta SV_{i,t-l} + \theta X_{i,t-l} + \varepsilon_{i,t} \quad (2)$$

where  $SV_{i,t-l}$  is a measure of vaccine surprises constructed by taking the difference between the share of people that are fully vaccinated and the expected share as predicted by Airfinity's supply-driven vaccine rollout model (see data section for details). All other variables are the same as in equation (1).

## B. Role of country-specific conditions on the effect of vaccines on economic activity

We also test the role of country-specific conditions in shaping the effects of vaccinations on economic activity. Namely, we examine whether the impact of vaccines on economic outcomes varies depending on the stringency of containment measures, or the severity of the outbreak itself. For this, we use a semi-parametric approach in which we interact vaccination surprises with quartiles ("bins") of country-specific conditions. This approach does not impose the strong parametric restriction of the effectiveness of vaccines changing linearly with country conditions. Rather, it allows us to flexibly explore variation in vaccine effectiveness across the distribution of country conditions.<sup>9</sup> We augment equation (2) with the following:

$$\Delta Y_{i,t} = \mu_i + \gamma_t + \beta_1 Q_1 * SV_{i,t-l} + \beta_2 Q_2 * SV_{i,t-l} + \beta_3 Q_3 * SV_{i,t-l} + \beta_4 Q_4 * SV_{i,t-l} + \sum_{j=1}^4 \delta_j Q_j + \theta X_{i,t-l} + \varepsilon_{i,t} \quad (3)$$

---

<sup>9</sup> Results are qualitatively similar when using simple interaction terms instead of the semi-parametric specification described in Equation 3.

1  
2  
3  
4 where  $Q_1$ ,  $Q_2$ ,  $Q_3$ , and  $Q_4$  are dummy variables that denote alternatively quartiles of the  
5  
6 stringency of containment measures, or the level of new COVID-19 cases in a country. Quartiles  
7  
8 are interacted with our vaccine surprises variable. Interaction terms are also lagged 1 day,  
9  
10 consistent with the vaccine surprise variable. If the coefficients on the interaction terms of higher  
11  
12 quartiles differ from those at lower quartiles, it signifies that the effectiveness of vaccines  
13  
14 depends on country-specific conditions. In the robustness checks, we also test for alternative  
15  
16 non-linear specifications such as those based on linear interactions and smooth transition  
17  
18 functions.  
19  
20  
21  
22  
23

### 24 **C. Effect of COVID-19 cases and vaccines in trading partners on economic outcomes**

25  
26  
27 We further test whether a pandemic outbreak in a countries' close trading partners can  
28  
29 affect economic activity locally. Similarly, we also explore whether increased vaccines  
30  
31 administered in a country's main trading partners can help boost economic activity locally. To  
32  
33 investigate whether this may be the case, we create the following:  
34  
35  
36  
37

$$38 \text{Trading Partner}_{i,t} = \sum_{j=1}^N w_{i,j} * \text{Outcomes}_{j,t} \quad (4)$$

39  
40  
41 where  $\text{Trading Partner}_{i,t}$  is a term which alternatively denotes the COVID-19 cases or  
42  
43 COVID-19 vaccinations in country  $i$ 's main trading partners.  $\text{Outcomes}_{j,t}$  refer to either  
44  
45 country  $j$ 's COVID-19 cases or vaccinations as a share of population at time  $t$ . These outcomes  
46  
47 are combined with  $w_{i,j}$ , trade weights constructed based on bilateral trade flows (exports and  
48  
49 imports from the 2019 Directional of Trade Statistics) between country  $i$  and country  $j$  that are  
50  
51 scaled by total exports and imports such that  $\sum_{j=1}^{n-i} w_{i,j}=1$ . The weights thus capture each  
52  
53 country's relative trade exposure to its different trading partners, and the spillover term  
54  
55  
56  
57  
58  
59  $\text{Trading Partner}_{i,t}$  captures COVID-19 cases/vaccines in a country's trading partners,  
60  
61  
62  
63  
64  
65

1  
2  
3  
4 assigning higher weights to countries with strong trade linkages under the assumption that  
5  
6 countries with closer trading relationships will have a larger impact on domestic economic  
7  
8 activity.<sup>10</sup> This term is introduced to equation (2) as following:  
9

$$\Delta Y_{i,t} = \alpha + \mu_i + \gamma_t + \beta SV_{i,t-l} + \gamma Trading\ Partner_{j,t-m} + \theta X_{i,t-l} + \varepsilon_{i,t} \quad (5)$$

10  
11  
12 Equations (1) through (5) are estimated using OLS, with standard errors clustered at the country  
13  
14  
15  
16  
17  
18 level.  
19  
20  
21  
22

## 23 24 **IV. Results**

### 25 26 27 **A. Baseline results**

28  
29  
30 We begin by assessing the impact of vaccinations on high frequency proxies of economic  
31  
32 activity—the level of nitrogen dioxide (NO<sub>2</sub>) emissions, the level of carbon monoxide (CO)  
33  
34 emissions and the decline in retail and recreation mobility. Table 3 column 1 shows estimates for  
35  
36 equation (1) with change in NO<sub>2</sub> as the dependent variable. The coefficient on vaccinations is  
37  
38 positive and significant, indicating that higher vaccination rates are associated with an increase in  
39  
40 economic activity. Next, we introduce the second vaccine dose as an additional variable and find  
41  
42 that second vaccine doses also have a significant effect on NO<sub>2</sub> emissions (Table 3, column 2).  
43  
44  
45  
46  
47  
48  
49  
50  
51  
52  
53

---

54  
55  
56 <sup>10</sup> As the pandemic has impacted trade very differently across sectors (e.g. tourism has been adversely impacted  
57 while trade in medical goods and electronics has boomed), the spillover effects may also depend on the structure of  
58 trade between countries. For example, more cases or lockdowns in a trading partner which imports medical goods or  
59 electronics may have less of a negative impact than a trading partner which imports agricultural and mining  
60 products. While these effects would be interesting to explore, we leave this for future research.  
61  
62  
63  
64  
65

1  
2  
3  
4 The impact of vaccination on economic activity based on equation (1) might however be  
5  
6 biased due to residual concerns regarding endogeneity. As discussed before, to address this, we  
7  
8 focus on surprises in vaccines administered (per capita) measured as the difference between  
9  
10 actual vaccinations and the expected vaccination rollout, which we show is more likely to be  
11  
12 exogenous. We find that surprises in vaccinations are strongly associated with higher NO<sub>2</sub>  
13  
14 emissions (Table 3, column 3).<sup>11</sup> The magnitude of the coefficient of vaccine surprise is typically  
15  
16 larger than those of first and second doses suggesting that expectations play a role.  
17  
18

19  
20 Quantitatively, a surprise increase in vaccinations by 10 percent of population is associated with  
21  
22 an increase in daily per capita NO<sub>2</sub> emissions of around 0.112, which is about a 0.28 standard  
23  
24 deviation increase in NO<sub>2</sub>, or an increase of almost 30 percent relative to median.<sup>12</sup> As expected,  
25  
26 stronger containment measures are also associated with lower economic activity. Taking the  
27  
28 results at face value they imply that a 10-percentage points vaccine surprise has about the same  
29  
30 impact on economic activity as going from a full lockdown (stringency index of 1) to  
31  
32 containment measures equivalent to a stringency level of 0.5.<sup>13</sup>  
33  
34  
35  
36  
37  
38

39 Columns 4 through 8 of Table 3 repeat the analysis with changes in CO as the dependent  
40  
41 variable while columns 9 through 12 use mobility as the dependent variables. The results for CO  
42  
43 are statistically weaker and generally not significant at one lag. The insignificant impact on CO  
44  
45  
46  
47  
48

---

49 <sup>11</sup> Throughout the paper we use the vaccine surprise variable as an independent variable, similar to the use of fiscal  
50 policy shocks in Ramey (2011), Auerbach and Gorodnichenko (2013) and Ramey and Zubairy (2018). However, the  
51 results are broadly similar if we use vaccine surprises as an instrument for the percent of population that is fully  
52 vaccinated (Annex Table 3). See Ramey (2016) for a discussion on using macroeconomic variables as shocks or  
53 instruments in VAR and Local Projection settings.  
54

55 <sup>12</sup> We further test the residual term for unit root and cointegration tests reject the hypothesis of no cointegration.

56 <sup>13</sup> The quantitative comparison between the impact of vaccines and containment measures on economic activity  
57 should be interpreted with caution as this assumes a linear impact of both variables on economic activity. We find  
58 that vaccines have non-linear effects (see below) on economic activity, and potential non-linearities associated with  
59 the impact of containment measures makes such direct comparisons problematic. In addition, containment might be  
60 endogenous to vaccinations despite additional controls, making such a comparison difficult.  
61  
62  
63  
64  
65



1  
2  
3  
4 at short horizons may reflect the weaker correlation between CO and other measures of  
5  
6 economic activity documented in Table 1. As discussed below, the impact on CO becomes  
7  
8 significant at longer lags. For mobility measures, vaccine surprises have a significant positive  
9  
10 impact, with a 10-percentage points vaccine surprise associated with an increase in mobility of 5  
11  
12 points (Table 3, column 11), which is equivalent to the average difference in mobility in the US  
13  
14 in March 2021 when a bulk of containment measures remained in place versus mobility in May  
15  
16 2021 when access to vaccines improved and states started easing restrictions gradually.  
17  
18  
19  
20

### 21 **Lag Structure**

22  
23 Turning to the lag structure, Figure 3-5 shows that the impact of vaccination increases  
24  
25 with greater lags, as economic agents gain greater protection from the virus and increasingly  
26  
27 resume economic activities. In particular, the results for CO, which are not statically significant  
28  
29 immediately, become significant over time.  
30  
31  
32

### 33 **Other Robustness**

34  
35 The results are robust to different subsamples. Annex Tables 4 summarizes the  
36  
37 robustness results for NO<sub>2</sub>: (i) the results hold when the data is winsorized to ensure that the  
38  
39 results are not driven by outliers; (ii) our results go through if we drop countries that started  
40  
41 vaccinating late such as Colombia and Vietnam—started their vaccination campaigns after  
42  
43 March 1; (iii) the results are also robust to dropping countries that started vaccinations very early  
44  
45 such as United States and United Kingdom —already reached 5 percent of the population by  
46  
47 Feb 1; and (iv) the results hold if we drop one region at a time or one country at a time,  
48  
49 suggesting that they are not driven by a particular region or country with high levels of  
50  
51 vaccinations (such as the United States, the United Kingdom, or Israel).  
52  
53  
54  
55  
56  
57  
58

### 59 **Non-linear Effects**

60  
61  
62  
63  
64  
65

1  
2  
3  
4           Next, we test for non-linearities in the impact of vaccines on economic activity.  
5

6  
7       Economic activity may not respond significantly to vaccinations in the initial phase of the  
8  
9       vaccine rollout which often targets specific groups (health-care workers or the elderly). As the  
10  
11       rollout continues and vaccinations spread to a wider set of people, confidence is more likely to  
12  
13       improve, in part because individuals are more willing to reduce voluntary social distancing as the  
14  
15       risk of infections go down.  
16  
17

18  
19           Column 1 of Table 4 reports results for change in  $NO_2$  as the dependent variable, where  
20  
21       we include the share of population that has received one vaccine dose as well as the square of  
22  
23       this variable as independent variables. We find evidence for non-linear effects, with the square  
24  
25       term being positive and significant indicating that the economic benefits of vaccinations are  
26  
27       larger when vaccination rates increase. Similar non-linear effects are seen for the second vaccine  
28  
29       dose (Table 4, column 3).  
30  
31

32  
33           Columns 4-6 of Table 4 test for non-linear effects of our more exogenous vaccine  
34  
35       surprise variable and finds similar results. Column 4 allows for the simple interaction between  
36  
37       the vaccine surprise variable and the share of population that is fully vaccinated. The interaction  
38  
39       term is positive and significant, indicating that vaccine surprises have larger economic effects  
40  
41       when the level of vaccinations is higher. In column 5 we present the results obtained by  
42  
43       interacting the vaccine surprise variable with different quartiles of the share of people fully  
44  
45       vaccinated, while in column 6 those by interacting vaccination rates with the surprise variable  
46  
47       using a smooth transition function. Results are similar across specifications.  
48  
49  
50  
51  
52  
53  
54  
55  
56  
57  
58  
59  
60  
61  
62  
63  
64  
65

1  
2  
3  
4 Annex Tables 5 and 6 repeat the non-linear regressions with changes in CO and mobility  
5  
6 as the dependent variable respectively. Results for these other indicators are generally less  
7  
8 precisely estimated compared to NO<sub>2</sub>.<sup>14</sup>  
9  
10  
11  
12  
13  
14

## 15 **B. Role of Containment Measures and Severity of Outbreak**

16  
17

18 This section examines the extent to which the impact of vaccines on economic outcomes  
19  
20 depends on other factors such as the stringency of containment measures and the severity of the  
21  
22 outbreak.  
23  
24  
25

### 26 **Stringency of Containment Measures**

27  
28

29 In addition to the impact of vaccines, economic activity is also dependent on the severity  
30  
31 of non-pharmaceutical interventions in the form of containment measures. A quick vaccine  
32  
33 rollout may not lead to an immediate improvement in economic outcomes if strong containment  
34  
35 measures need to be maintained at the same time. Column 1 of Table 5 adds an interaction term  
36  
37 between the vaccine surprise term and the stringency of containment measures categorized into  
38  
39 quartiles (equation 3). The interaction terms are negative for the higher quartiles and  
40  
41 significantly different from zero for the 4<sup>th</sup> quartile. This indicates that an increase in vaccines  
42  
43 leads to a smaller positive impact on NO<sub>2</sub> emissions when accompanied with stringent  
44  
45 containment measures, potentially because movement restrictions prevent individuals from  
46  
47 ramping up economic activity in response to higher vaccination rates. Column 3 of Table 5  
48  
49  
50  
51  
52  
53  
54  
55

---

56 <sup>14</sup> In principle, the economic benefits from vaccines may hit diminishing returns once vaccination rates hit high  
57  
58 enough levels, especially as a country approaches herd immunity. We add cubic terms to the regression to test this  
59  
60 hypothesis but do not find any evidence for diminishing returns. This result may potentially reflect the fact that not  
61  
62 enough countries have reached high enough vaccination rates to approach herd immunity, in part because the new,  
63  
64 more transmissible, variants of the virus may have raised herd immunity thresholds.  
65

1  
2  
3  
4 repeats the analysis using retail mobility as the dependent variable. The results are similar to the  
5  
6 NO<sub>2</sub> regressions.  
7  
8

### 9 10 **Severity of the Outbreak**

11  
12  
13 The impact of vaccines on economic activity is also likely to depend on the stage of the  
14  
15 outbreak. If a country is in the middle of a large outbreak, an increase in vaccine rollout may  
16  
17 have only a muted impact on activity as people continue to voluntarily socially distance till cases  
18  
19 come down significantly. To test this hypothesis, column 2 of Table 5 adds an interaction term  
20  
21 between the vaccine surprise variable and the number of new cases (moving average over seven  
22  
23 days) in the country categorized into quartiles (equation 2). The interaction terms are negative  
24  
25 and significant for the higher quartiles, supporting the hypothesis that voluntary social distancing  
26  
27 may limit the beneficial impact of vaccines on economic activity when cases are high. Results  
28  
29 are qualitatively similar when using mobility as the dependent variable, though statistically  
30  
31 weaker.<sup>15</sup>  
32  
33  
34  
35  
36  
37

### 38 **C. Spillovers from foreign COVID-19 cases and vaccines to economic activity**

39  
40 The pace of COVID-19 vaccinations across countries has been uneven, producing  
41  
42 divergent economic and health outcomes across nations. In this section, we explore whether  
43  
44 global health and vaccination outcomes can have an indirect effect on a country's own economic  
45  
46 activity levels through economic linkages such as trade. We also investigate whether the rapid  
47  
48 vaccination pace in a systemically important economy such as the US would have any spillover  
49  
50 effects to the rest of the world.  
51  
52  
53  
54  
55  
56  
57  
58

---

59 <sup>15</sup> Annex Table 7 uses CO (columns 1 and 2) and mobility (column 3 and 4) as the dependent variable for similar  
60 interaction regressions. The results are generally weaker for these measures of economic activity.  
61  
62  
63  
64  
65

### Effect of foreign COVID-19 cases on local economic activity

Deb et al. (2021a) find that neighboring COVID-19 cases can have a significant effect on a country's own pandemic, amplifying its own caseload despite vaccinations or containment measures. Similarly, we find significant spillover effects on country *i*'s economic activity, proxied by NO<sub>2</sub> emissions, through an increase in new COVID-19 cases in its main trading partners (Table 6, column 1). Namely, a one standard deviation increase in foreign COVID-19 cases would lead to an 0.10 standard deviation decrease in domestic NO<sub>2</sub> emissions, effectively reducing domestic economic activity through traditional economic linkages. This effect is lagged (Figure 6), with the impact becoming statistically significant after around 21 days. This is plausible, given that the negative effects of an outbreak on a country's economic activity is likely to take time to materialize, which implies that negative spillover effects would show after some lag.

### Effect of foreign COVID-19 vaccines on local economic activity

While foreign COVID-19 cases can have a dampening effect on local economic activity, the opposite seemingly holds for foreign COVID-19 vaccinations. First, we look at the spillovers from US vaccinations, given the relatively high rate of vaccinations in the US and the important global economic linkages. Table 6, column 2 adds a US spillover term to the regression which is calculated by multiplying US vaccination rates with each country's bilateral trade exposure to the US. We find that there are positive spillover effects from increased vaccinations in the United States.<sup>16</sup> Figure 7 shows the effect of US vaccinations on NO<sub>2</sub> emissions at different lags, with economic gains materializing with a 20-day lag.

---

<sup>16</sup> US vaccines' spillover term is calculated by multiplying US vaccines with each country's bilateral trade exposure to the US.

1  
2  
3  
4 Next, we look at spillovers from vaccinations more broadly by adding the average  
5  
6 vaccination rate of trading partners as described in equation 4 and 5. Results in Table 6 column 3  
7  
8 show that foreign COVID-19 vaccines have a positive and statistically significant effect on  
9  
10 economic activity, with one standard deviation increase in foreign COVID-19 vaccines leading  
11  
12 to a 0.13 standard deviation increase in NO<sub>2</sub> emissions. The result is persistent, and also  
13  
14 materializes with a lag: Figure 8 shows the impact of trading partner vaccination at different lags,  
15  
16 with a persistently higher trend again materializing around the 20-day mark. The results provide  
17  
18 additional evidence that a higher vaccination pace worldwide can also boost domestic economic  
19  
20 activity.  
21  
22  
23  
24  
25  
26

27 Agarwal and Gopinath (2021) stress the importance of vaccinating a large share of the  
28  
29 global population as quickly as possible, noting that “the pandemic is not over anywhere unless it  
30  
31 is over everywhere.” The economic spillover results in this paper and the health spillover results  
32  
33 in Deb et al. (2021) provide strong empirical evidence in support of such a policy, showing that a  
34  
35 virus outbreak in trading partners is likely to have severe negative health and economic  
36  
37 consequences domestically. Thus, ensuring an even distribution of vaccines, especially by  
38  
39 sharing any vaccine oversupply in advanced economies, can help bring the pandemic to a  
40  
41 speedier end, minimizing the global loss of lives and promoting a robust economic recovery.  
42  
43  
44  
45  
46  
47  
48  
49

## 50 **V. Conclusion**

51  
52 Vaccines against the coronavirus disease are key to exiting the health and economic  
53  
54 crises that COVID-19 has brought about. In this paper, we provide an empirical assessment of  
55  
56 the effects of COVID-19 vaccines on economic activity. We put together a novel daily database  
57  
58 of high-frequency economic indicators—NO<sub>2</sub> emissions, CO emissions, and Google mobility  
59  
60  
61  
62  
63  
64  
65

1  
2  
3  
4 indices, combined with data on new COVID-19 cases, vaccinations, and surprises in vaccines  
5 administered, as well as data on non-pharmaceutical intervention. To the best of our knowledge,  
6  
7 this is the first empirical assessment of the economic effects of COVID-19 vaccine surprises on a  
8  
9 large-scale sample (46 countries), and of the role of country-specific conditions and the impact  
10  
11 of COVID-19 vaccines and cases in main trading partners on a country's local economic activity.  
12  
13  
14  
15

16  
17 The results suggest that COVID-19 vaccines have a large and statistically significant  
18  
19 effect on economic activity. A surprise increase in vaccinations by 10 percent of population is  
20  
21 associated with an increase in daily per capita NO<sub>2</sub> emissions of about 0.3 standard deviations  
22  
23 (an increase of almost 30 percent relative to its median). This is equivalent to going from a full  
24  
25 lockdown (stringency index of 1) to containment measures equivalent to a stringency level of  
26  
27 0.5. We get similar significant results for mobility, with a 10-percentage points vaccine surprise  
28  
29 associated with an increase in mobility of 5 percentage points. CO emissions also increase in  
30  
31 response to increased vaccine surprises, but with a lag. These results are robust to alternative  
32  
33 specifications and, as our result show, the magnitude of the effect is likely to increase with  
34  
35 higher vaccination rates.  
36  
37  
38  
39  
40

41 We also find that the effect of COVID-19 vaccines on economic activity varies  
42  
43 depending on the level of stringency measures imposed in a country, as well as on the severity of  
44  
45 the pandemic outbreak in a country. Namely, the results suggest that the impact of vaccines  
46  
47 rollouts may not lead to an immediate improvement in economic outcomes if strong containment  
48  
49 measures need to be maintained at the same time. In addition, we find that the effect of vaccines  
50  
51 on economic activity is more muted when a country is experiencing a severe outbreak, or when  
52  
53 COVID-19 cases are high.  
54  
55  
56  
57  
58  
59  
60  
61  
62  
63  
64  
65

1  
2  
3  
4 Finally, the results provide evidence on the importance of an even access to vaccines  
5  
6 across nations, as we find that countries can be affected by pandemic spillovers via trade  
7  
8 linkages with their main trading partners. Namely, we find that while COVID-19 cases in main  
9  
10 trading partner countries can dampen local economic activity in a country, rollouts of vaccines  
11  
12 have the opposing effect, boosting local economic activity and thus speeding up the global  
13  
14 recovery. This highlights the potential gains from vaccine sharing, and the importance of  
15  
16 vaccinating early and broadly not only a country's own population, but all populations, in order  
17  
18 to bring a swifter end to the global economic crisis the pandemic had brought about.<sup>17</sup>  
19  
20  
21  
22  
23

24 The findings in this paper, combined with results from Deb et al. (2021a,b) on the  
25  
26 beneficial effects of vaccines on health outcomes, highlight the importance of vaccines to  
27  
28 address the crisis instigated by the COVID-19 pandemic (see also IMF, 2021). In addition to the  
29  
30 direct health and economic benefits of vaccines, this paper finds evidence for the dampening  
31  
32 effect of containment measures and local outbreaks on economic activity, and the importance of  
33  
34 sharing excess vaccine doses to boost global economic activity. We hope the empirical analysis  
35  
36 provides evidence to policymakers on the importance of vaccinating swiftly and efficiently, both  
37  
38 locally and globally, in order to exit the COVID-19 crisis.  
39  
40  
41  
42  
43

#### 44 **Abbreviations**

45  
46  
47 NO<sub>2</sub> Nitrogen Dioxide  
48  
49 CO Carbon monoxide  
50  
51  
52  
53  
54  
55

---

56 <sup>17</sup> As the number of countries with high vaccination rates remain limited at the time of writing, the paper was not  
57 able to explore the potential for diminishing returns to vaccines at high levels of vaccination. Exploring higher order  
58 non-linear effects (over and above the quadratic term shown in the paper) could be an interesting avenue for future  
59 research. If returns to vaccine were to diminish after a certain point, then this would add another rationale for  
60 sharing vaccine doses more equitably across countries.  
61  
62  
63  
64  
65



1  
2  
3  
4 **Declarations**  
5

6 *Availability of data and materials*: the authors would make them available after acceptance.

7 *Competing interests*: the authors have no relevant or material financial interests that relate to the  
8 research described in this paper  
9

10 *Funding*: no funding has been used for this research paper.

11 *Authors' contributions*: each author has equally contributed to the draft, the research design and  
12 analysis.  
13

14 *Acknowledgements*: The views expressed in this paper are those of the authors and do not  
15 necessarily represent those of the IMF or its member countries

16 *Authors' information* (optional): All authors: International Monetary Fund, Washington DC,  
17 20431, USA. Deb: pdeb@imf.org; Furceri: dfurceri@imf.org; Jimenez: djimenez@imf.org;  
18 Kothari: skothari@imf.org; Ostry: jostry@imf.org; Tawk: ntawk@imf.org.  
19  
20  
21

22 **References**  
23

24 Agarwal, Ruchir, and Gita Gopinath. "A proposal to end the COVID-19 pandemic." IMF Staff  
25 Discussion Notes 2021, no. 004 (2021).  
26

27 Auerbach, A. J., and Gorodnichenko, Y., 2013. Output spillovers from fiscal policy. *American*  
28 *Economic Review*, 103(3), 141-46.  
29

30 Carvalho, V.M., Hansen, S., Ortiz, A., Garcia, J.R., Rodrigo, T., Rodriguez Mora, S. and Ruiz de  
31 Aguirre, P., 2020. Tracking the COVID-19 crisis with high-resolution transaction data.  
32  
33

34 Coibion, O., Gorodnichenko, Y. and Weber, M., 2020. The cost of the covid-19 crisis:  
35 Lockdowns, macroeconomic expectations, and consumer spending (No. w27141). National  
36 Bureau of Economic Research.  
37  
38

39 Dagan, N., Barda, N., Kepten, E., Miron, O., Perchik, S., Katz, M.A., Hernán, M.A., Lipsitch,  
40 M., Reis, B., and Balicer, R.D., 2021. "BNT162b2 mRNA Covid-19 Vaccine in a Nationwide  
41 Mass Vaccination Setting". *N Engl J Med*, NEJMoa2101765.  
42  
43

44 Deb Pragyán, Furceri Davide, Jimenez Daniel, Kothari Siddharth, Ostry Jonathan D., Nour  
45 Tawk, 2021. "Determinants of COVID-19 Vaccine Rollouts and Their Effects on Health  
46 Outcomes", IMF Working Paper, XX/XXX.  
47  
48

49 Deb Pragyán, Furceri Davide, Ostry Jonathan D., Tawk Nour, and Naihan Yang, 2021. "Effects  
50 of Fiscal Measures during COVID-19", IMF Working Paper, XX/XXX.  
51

52 Deb Pragyán, Furceri Davide, Ostry Jonathan D., Nour Tawk, 2020a. "The Effects of  
53 Containment Measures on the COVID-19 Pandemic", IMF Working Paper, 20/159.  
54  
55

56 Deb Pragyán, Furceri Davide, Ostry Jonathan D., Nour Tawk, 2020b. "The Economic Effects of  
57 COVID-19 Containment Measures", IMF Working Paper, 20/158.  
58  
59  
60  
61  
62  
63  
64  
65

1  
2  
3  
4 Deb Pragyán, Ganslmeier Michael, Furceri Davide, Ostry Jonathan D., Nour Tawk, 2021.  
5 “Vaccinate Early and Vaccinate Broadly: On the Health and Economic Effects of COVID-19  
6 Vaccines” <https://www.researchsquare.com/article/rs-525515/v1>  
7  
8

9 Fernández-Villaverde, Jesús, and Charles I. Jones. Macroeconomic outcomes and COVID-19: a  
10 progress report. No. w28004. National Bureau of Economic Research, 2020.  
11

12 International Monetary Fund. “The Great Lockdown: Dissecting the Economic Effects”. World  
13 Economic Outlook, Chapter 2. October 2020a.  
14

15 International Monetary Fund. “COVID-19 Lockdowns and Exits in Asia: Some Lessons”. Asia  
16 and Pacific Regional Economic Outlook, Chapter 2. October 2020b.  
17

18 International Monetary Fund, 2021. Leveraging Opportunities from COVID-19 Vaccines: Early  
19 Lessons from Asia. Asia and Pacific Regional Economic Outlook, Chapter 3. Washington, DC.  
20

21 Lin, J-T., and Michael Brendon McElroy. "Detection from space of a reduction in anthropogenic  
22 emissions of nitrogen oxides during the Chinese economic downturn." *Atmospheric Chemistry  
23 and Physics* 11, no. 15 (2011): 8171-8188.  
24

25 Polack, F.P., Thomas, S.J., Kitchin, N., Absalon, J., Gurtman, A., et al., 2020. “C4591001  
26 Clinical Trial Group. Safety and Efficacy of the BNT162b2 mRNA Covid-19 Vaccine”. *N Engl J  
27 Med*, vol. 383(27), pp. 2603-2615.  
28

29 Ramey, A. Valerie (2011). “Identifying Government Spending Shocks: It's all in the Timing,”  
30 *The Quarterly Journal of Economics*, vol. 126(1), pages 1-50.  
31

32 Ramey, V. A., 2016. Macroeconomic shocks and their propagation. *Handbook of  
33 macroeconomics*, 2, 71-162.  
34

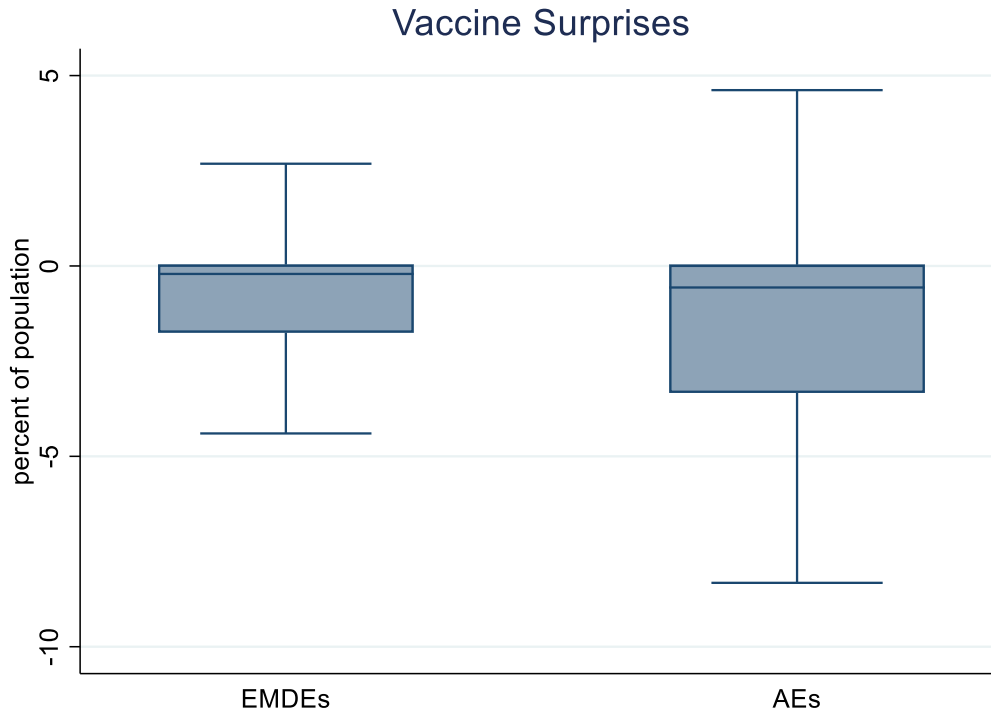
35 Ramey, V. A., & Zubairy, S., 2018. Government spending multipliers in good times and in bad:  
36 evidence from US historical data. *Journal of Political Economy*, 126(2), 850-901.  
37

38 Sampi Bravo, James Robert Ezequiel, and Charl Jooste. "Nowcasting economic activity in times  
39 of COVID-19: An approximation from the Google Community Mobility Report." World Bank  
40 Policy Research Working Paper 9247 (2020).  
41

42 Sandmann, Frank G., Nicholas G. Davies, Anna Vassall, W. John Edmunds, Mark Jit, Fiona  
43 Yueqian Sun, C. Julian Villabona-Arenas et al. "The potential health and economic value of  
44 SARS-CoV-2 vaccination alongside physical distancing in the UK: a transmission model-based  
45 future scenario analysis and economic evaluation." *The Lancet Infectious Diseases* (2021).  
46

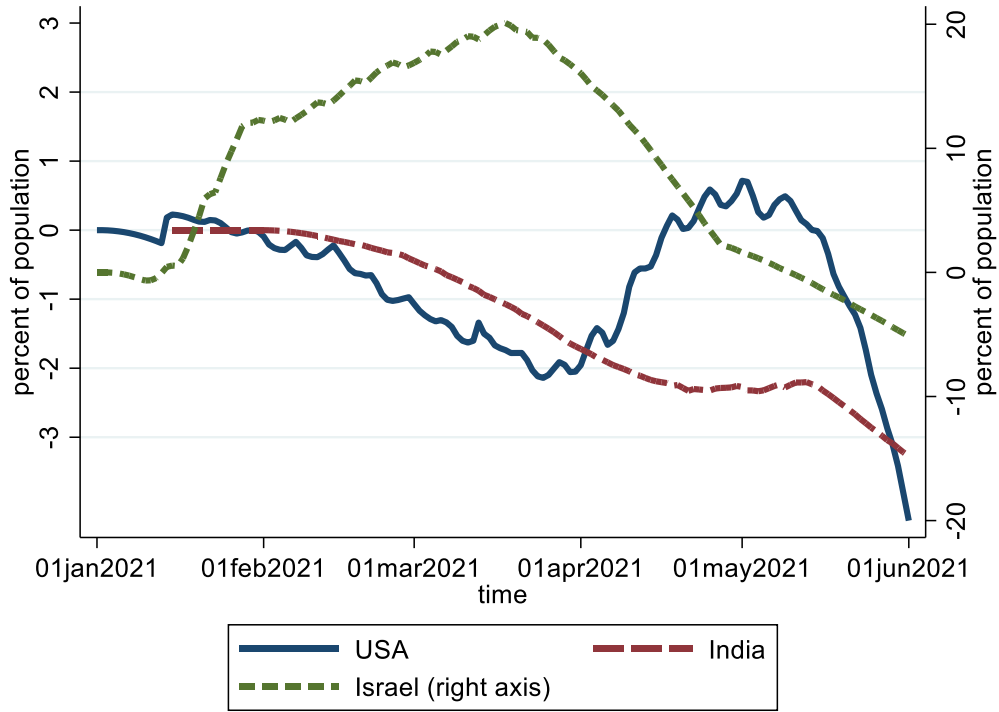
47 Voysey, Merryn, Sue Ann Costa Clemens, Shabir A. Madhi, Lily Y. Weckx, Pedro M. Folegatti,  
48 Parvinder K. Aley, Brian Angus et al. "Safety and efficacy of the ChAdOx1 nCoV-19 vaccine  
49 (AZD1222) against SARS-CoV-2: an interim analysis of four randomised controlled trials in  
50 Brazil, South Africa, and the UK." *The Lancet* 397, no. 10269 (2021): 99-111.  
51  
52  
53  
54  
55  
56  
57  
58  
59  
60  
61  
62  
63  
64  
65

1  
2  
3  
4 **Figure 1.** Vaccine surprises, people fully vaccinated (percent of population)  
5  
6  
7



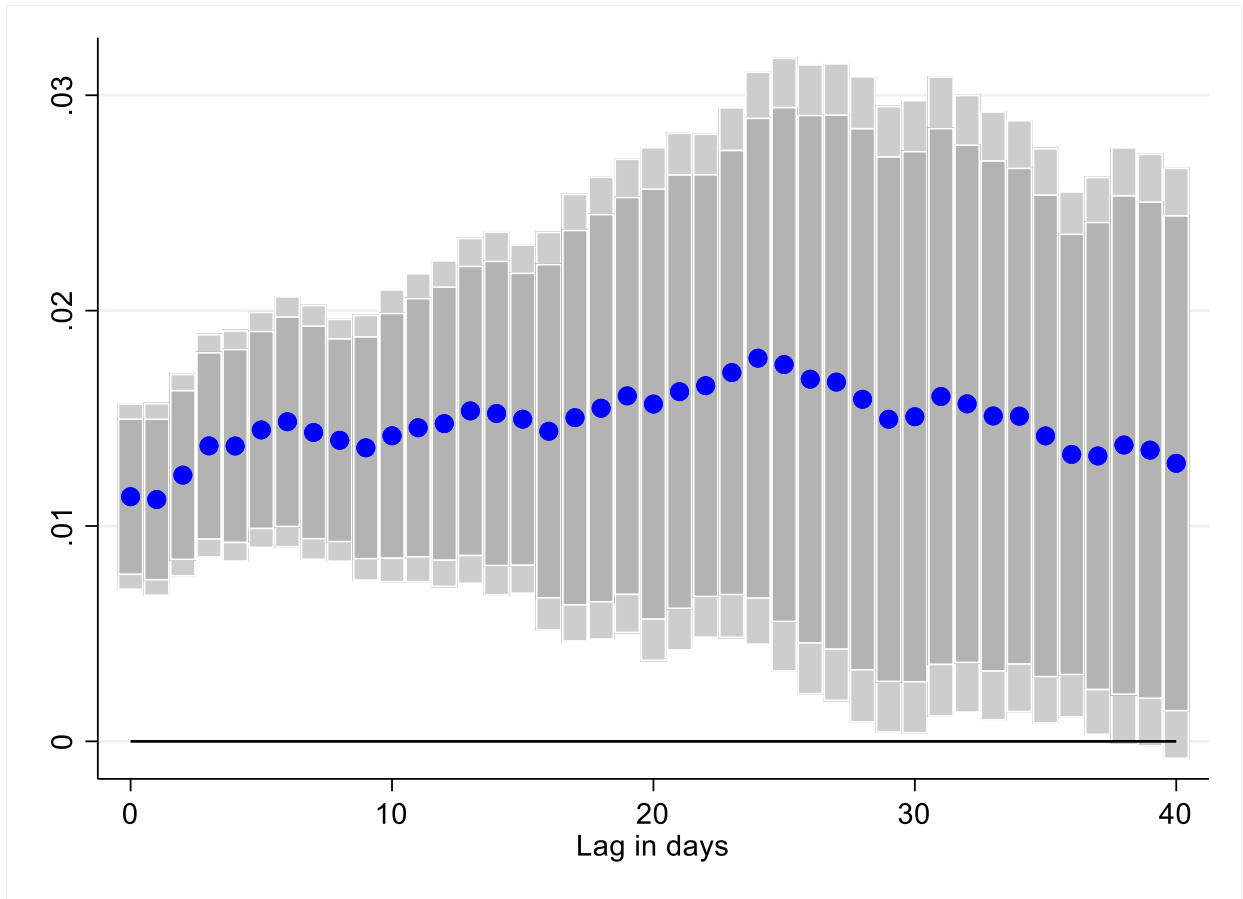
32 Source: Airfinity, Our World in Data, IMF staff calculations.  
33  
34  
35  
36  
37  
38  
39  
40  
41  
42  
43  
44  
45  
46  
47  
48  
49  
50  
51  
52  
53  
54  
55  
56  
57  
58  
59  
60  
61  
62  
63  
64  
65

1  
2  
3  
4 **Figure 2.** Vaccine surprises, people fully vaccinated (percent of population)  
5  
6



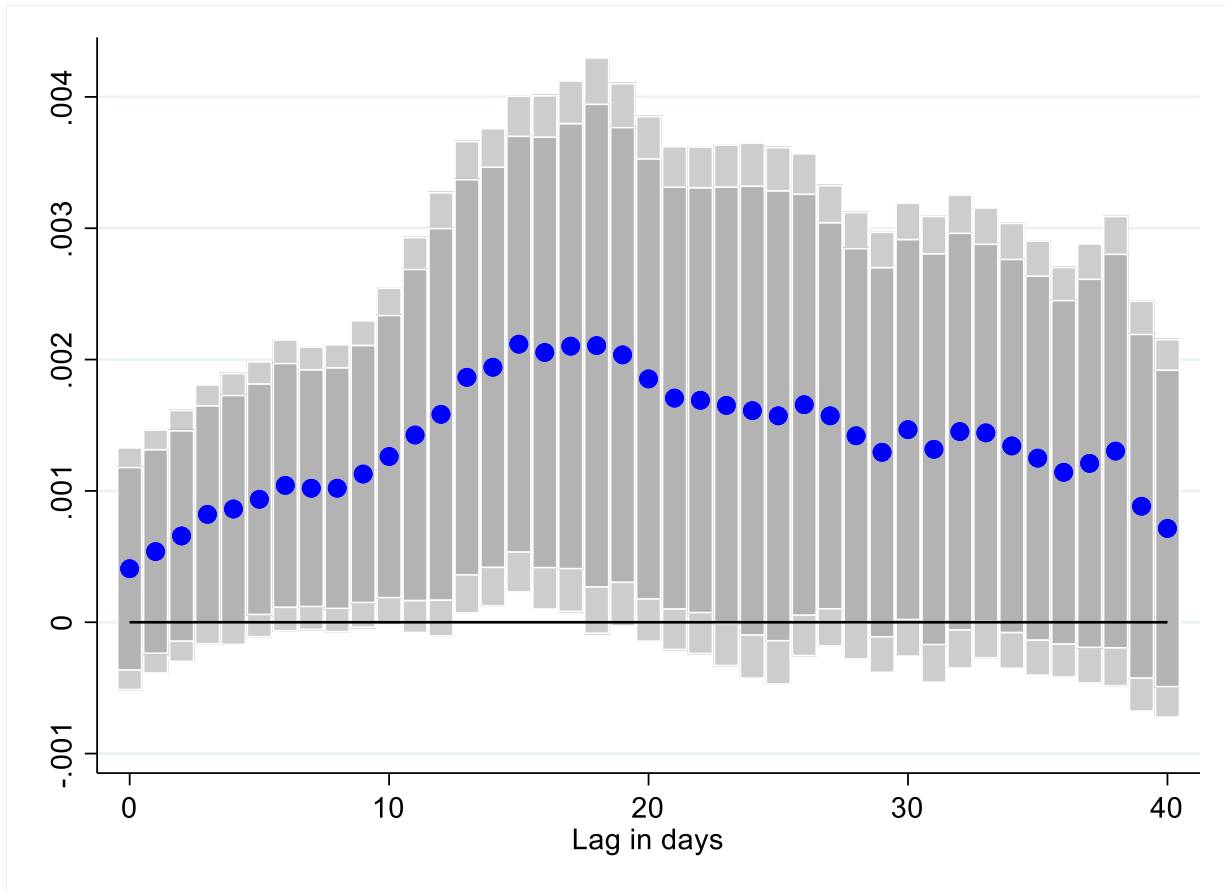
32 Source: Airfinity, Our World in Data, IMF staff calculations.  
33  
34  
35  
36  
37  
38  
39  
40  
41  
42  
43  
44  
45  
46  
47  
48  
49  
50  
51  
52  
53  
54  
55  
56  
57  
58  
59  
60  
61  
62  
63  
64  
65

**Figure 3.** Effect of vaccinations on NO<sub>2</sub> emissions per capita, at different lags



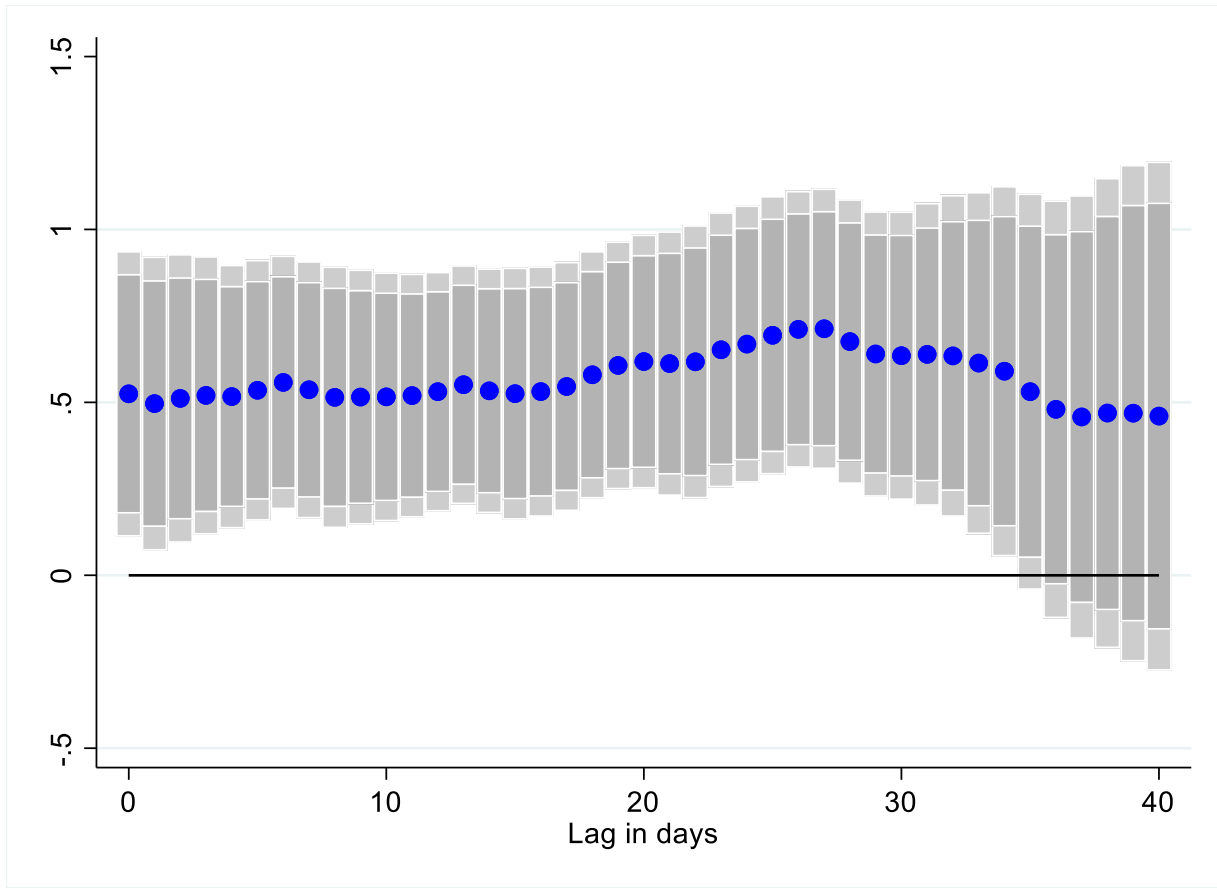
**Note:** Coefficient  $\beta$  is reported for each lag  $\ell$  (1-40), and based on  $\Delta Y_{i,t} = \alpha + \mu_i + \gamma_t + \beta SV_{i,t-\ell} + \theta X_{i,t-\ell} + \varepsilon_{i,t}$  for a sample of 44 countries using daily data from December 20, 2020–June 16, 2021.  $Y_{i,t}$  denotes NO<sub>2</sub> emissions per capita and  $SV_{i,t-\ell}$  is the surprises in vaccines administered (per capita).  $\mu_i$  and  $\gamma_t$  are the country and time fixed effects.  $X$  is a vector of control variables which includes the level of new cases, NO<sub>2</sub> and CO emissions per capita, the stringency of containment measures index, and mobility indices at  $t-1$ . Lightly shaded bars denote 90 percent confidence bands, and dark-shaded bars denote 95 percent confidence bands.

**Figure 4.** Effect of vaccinations on CO emissions per capita, at different lags



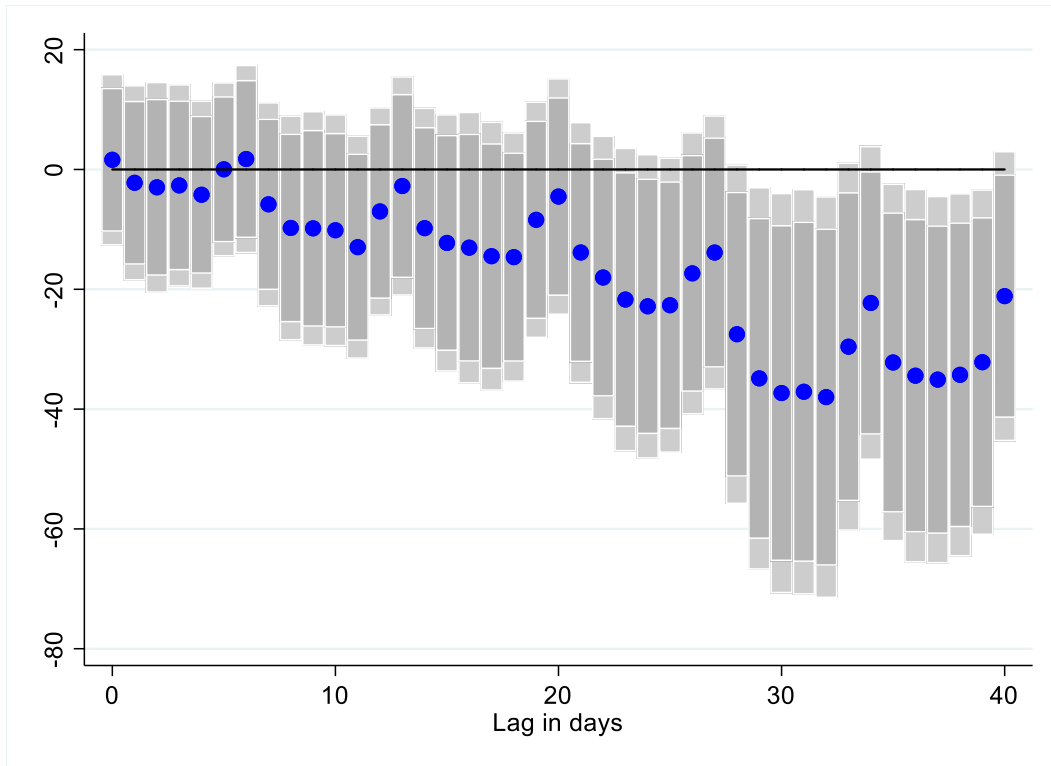
**Note:** Coefficient  $\beta$  is reported for each lag  $\ell$  (1-40), and based on  $\Delta Y_{i,t} = \alpha + \mu_i + \gamma_t + \beta SV_{i,t-\ell} + \theta X_{i,t-\ell} + \varepsilon_{i,t}$  for a sample of 44 countries using daily data from December 20, 2020–June 16, 2021.  $Y_{i,t}$  denotes CO emissions per capita and  $SV_{i,t-\ell}$  is the surprises in vaccines administered (per capita).  $\mu_i$  and  $\gamma_t$  are the country and time fixed effects.  $X$  is a vector of control variables which includes the level of new cases,  $\text{NO}_2$  and CO emissions per capita, the stringency of containment measures index, and mobility indices at  $t-1$ . Lightly shaded bars denote 90 percent confidence bands, and dark-shaded bars denote 95 percent confidence bands.

Figure 5. Effect of vaccinations on mobility, at different lags



Note: Coefficient  $\beta$  is reported for each lag  $\ell$  (1-40), and based on  $\Delta Y_{i,t} = \alpha + \mu_i + \gamma_t + \beta SV_{i,t-\ell} + \theta X_{i,t-\ell} + \varepsilon_{i,t}$  for a sample of 44 countries using daily data from December 20, 2020–June 16, 2021.  $Y_{i,t}$  denotes changes in retail and recreation mobility and  $SV_{i,t-\ell}$  is the surprises in vaccines administered (per capita).  $\mu_i$  and  $\gamma_t$  are the country and time fixed effects.  $X$  is a vector of control variables which includes the level of new cases,  $\text{NO}_2$  and CO emissions per capita, the stringency of containment measures index, and mobility indices at  $t-1$ . Lightly shaded bars denote 90 percent confidence bands, and dark-shaded bars denote 95 percent confidence bands.

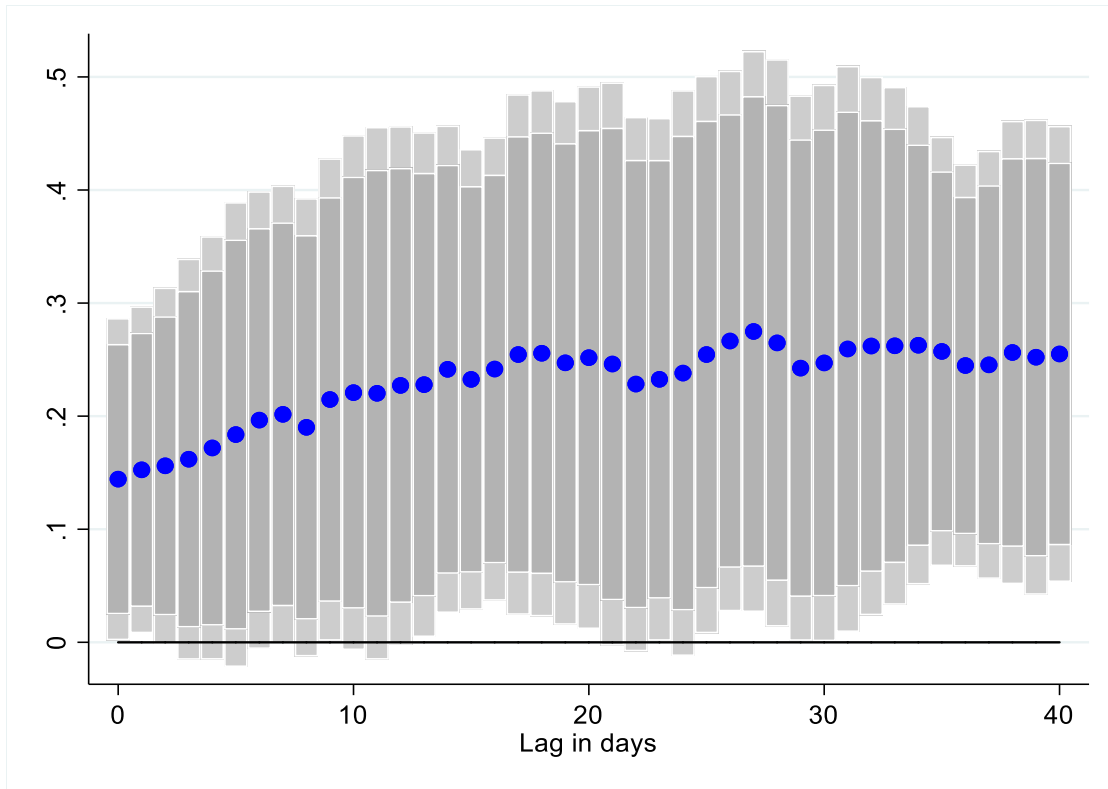
**Figure 6.** Effect of foreign new COVID-19 cases on economic activity



**Note:** Coefficient  $\gamma$  is reported for each lag  $\ell$  (1-40), and based on  $\Delta Y_{i,t} = \alpha + \mu_i + \gamma_t + \beta SV_{i,t-l} + \gamma Trading Partner_{j,t-m} + \theta X_{i,t-l} + \varepsilon_{i,t}$  for a sample of 43 countries using daily data from December 20, 2020–June 16, 2021. where  $Y_{i,t}$  denotes: the number of new COVID-19 cases.  $Trading Partner_{i,t}$  is a spillover term for COVID-19 cases in main trading partner countries.  $SV_{i,t-l}$  denotes the share of the individuals in the population which have received at least one vaccine shot.  $\mu_i$  and  $\gamma_t$  are the country and time fixed effects.  $X$  is a vector of control variables which includes the level of new cases,  $NO_2$  and  $Co$  emissions per capita, the stringency of containment measures index, and mobility indices at  $t-1$ .  $\ell$  denotes the lags in the response of new COVID-19 cases. Lightly shaded bars denote 90 percent confidence bands, and dark-shaded bars denote 95 percent confidence bands.

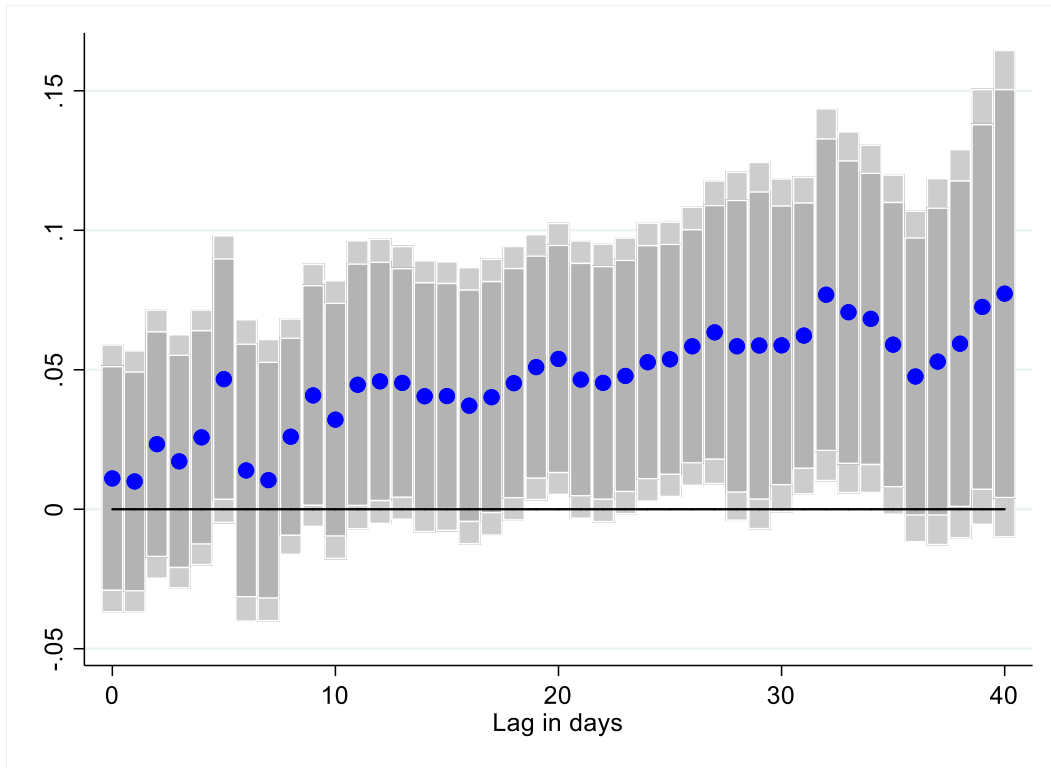


**Figure 7.** Effect of US COVID-19 vaccinations on economic activity



**Note:** Coefficient  $\gamma$  is reported for each lag  $\ell$  (1-40), and based on  $\Delta Y_{i,t} = \alpha + \mu_i + \gamma_t + \beta SV_{i,t-l} + \gamma Trading\ Partner_{j,t-m} + \theta X_{i,t-l} + \varepsilon_{i,t}$  for a sample of 43 countries using daily data from December 20, 2020–June 16, 2021. where  $Y_{i,t}$  denotes: the number of new COVID-19 cases.  $Trading\ Partner_{i,t}$  is a spillover term for COVID-19 vaccinations in the US.  $SV_{i,t-l}$  denotes the share of the individuals in the population which have received at least one vaccine shot.  $\mu_i$  and  $\gamma_t$  are the country and time fixed effects.  $X$  is a vector of control variables which includes the level of new cases, NO<sub>2</sub> and Co emissions per capita, the stringency of containment measures index, and mobility indices at  $t-1$ .  $\ell$  denotes the lags in the response of new COVID-19 cases. Lightly shaded bars denote 90 percent confidence bands, and dark-shaded bars denote 95 percent confidence bands.

**Figure 8.** Effect of foreign COVID-19 vaccines on economic activity



**Note:** Coefficient  $\gamma$  is reported for each lag  $\ell$  (1-40), and based on  $\Delta Y_{i,t} = \alpha + \mu_i + \gamma_t + \beta SV_{i,t-l} + \gamma Trading\ Partner_{j,t-m} + \theta X_{i,t-l} + \varepsilon_{i,t}$  for a sample of 43 countries using daily data from December 20, 2020–June 16, 2021. where  $Y_{i,t}$  denotes: the number of new COVID-19 cases.  $Trading\ Partner_{i,t}$  is a spillover term for COVID-19 vaccinations in main trading partner countries.  $SV_{i,t-l}$  denotes the share of the individuals in the population which have received at least one vaccine shot.  $\mu_i$  and  $\gamma_t$  are the country and time fixed effects.  $X$  is a vector of control variables which includes the level of new cases,  $NO_2$  and Co emissions per capita, the stringency of containment measures index, and mobility indices at  $t-l$ .  $\ell$  denotes the lags in the response of new COVID-19 cases. Lightly shaded bars denote 90 percent confidence bands, and dark-shaded bars denote 95 percent confidence bands.

**Table 1.** High frequency indicators and monthly measures of economic activity (2019-2021)

| VARIABLES                         | (1)                    | (2)                    | (3)                    | (4)                    | (5)                  | (6)                  | (7)                  | (8)                  | (9)                        |
|-----------------------------------|------------------------|------------------------|------------------------|------------------------|----------------------|----------------------|----------------------|----------------------|----------------------------|
|                                   | NO <sub>2</sub>        | NO <sub>2</sub>        | NO <sub>2</sub>        | CO                     | CO                   | CO                   | Mobility             | Mobility             | Mobility                   |
| Industrial Production (IP)        | 0.365665***<br>(0.077) |                        |                        | 0.173088***<br>(0.059) |                      |                      | 8.497571*<br>(4.251) |                      |                            |
| Purchasing Managers' Index (PMI)  |                        | 0.253454***<br>(0.085) |                        |                        | -0.082399<br>(0.085) |                      |                      | 2.700382<br>(3.941)  |                            |
| Composite Leading Indicator (CLI) |                        |                        | 0.004974**<br>(0.002)  |                        |                      | 0.003803<br>(0.002)  |                      |                      | 1.040853***<br>(0.365)     |
| Constant                          | -0.011543<br>(0.035)   | 0.011421<br>(0.037)    | -0.463284**<br>(0.189) | -0.016109<br>(0.043)   | 0.001686<br>(0.038)  | -0.398601<br>(0.237) | 0.258797<br>(1.670)  | -0.913749<br>(1.740) | -102.413798***<br>(36.859) |
| Observations                      | 1,178                  | 1,070                  | 1,017                  | 976                    | 956                  | 803                  | 944                  | 918                  | 592                        |
| R-squared                         | 0.262                  | 0.201                  | 0.213                  | 0.119                  | 0.061                | 0.074                | 0.574                | 0.519                | 0.623                      |
| Country FE                        | Yes                    | Yes                    | Yes                    | Yes                    | Yes                  | Yes                  | Yes                  | Yes                  | Yes                        |
| Time FE                           | Yes                    | Yes                    | Yes                    | Yes                    | Yes                  | Yes                  | Yes                  | Yes                  | Yes                        |
| No. of countries                  | 43                     | 39                     | 37                     | 38                     | 37                   | 31                   | 57                   | 54                   | 37                         |

Note: Standard error clustered at the country level. Robust standard errors in parentheses \*\*\*, \*\*, and \* represent statistically significant at 1, 5 and 10 percent respectively.

**Table 2. NO<sub>2</sub> emissions and economic activity—historical data (1990-2018)**

|                         | (1)                   | (2)                   | (3)                  | (4)                   | (5)                   | (6)                  | (7)                  | (8)                  | (9)                  |
|-------------------------|-----------------------|-----------------------|----------------------|-----------------------|-----------------------|----------------------|----------------------|----------------------|----------------------|
| GDP growth              | 0.341**<br>(2.147)    | 0.326*<br>(1.942)     | 0.307*<br>(1.865)    |                       |                       |                      |                      |                      |                      |
| Manufacturing VA growth |                       |                       |                      | 0.130***<br>(3.347)   | 0.134***<br>(3.426)   | 0.135***<br>(3.334)  |                      |                      |                      |
| IP growth               |                       |                       |                      |                       |                       |                      | 0.203*<br>(2.028)    | 0.201**<br>(2.166)   | 0.206**<br>(2.381)   |
| Time trend              | -0.001***<br>(-3.353) | -0.001<br>(-1.520)    | 0.000<br>(0.770)     | -0.002***<br>(-3.352) | -0.001**<br>(-2.086)  | -0.001<br>(-1.046)   | -0.002**<br>(-2.348) | 0.000<br>(0.638)     | 0.001<br>(0.919)     |
| Average temperature     |                       | -0.012***<br>(-3.285) | -0.011**<br>(-2.521) |                       | -0.011***<br>(-3.151) | -0.011**<br>(-2.628) |                      | -0.010**<br>(-2.214) | -0.012**<br>(-2.537) |
| Urban population        |                       | -0.004<br>(-1.335)    |                      |                       | -0.004<br>(-1.324)    |                      |                      | -0.011**<br>(-2.088) |                      |
| Population Density      |                       |                       | -0.001*<br>(-1.920)  |                       |                       | -0.001*<br>(-1.896)  |                      |                      | -0.002**<br>(-2.097) |
| Income per-capita       |                       |                       | 0.000<br>(0.065)     |                       |                       | 0.000<br>(0.108)     |                      |                      | -0.000<br>(-1.200)   |
| Log GDP                 |                       |                       | -0.056<br>(-1.601)   |                       |                       |                      |                      |                      |                      |
| Log Manufacturing VA    |                       |                       |                      |                       |                       | 0.005<br>(0.295)     |                      |                      |                      |
| Log IP                  |                       |                       |                      |                       |                       |                      |                      |                      | -0.042<br>(-1.356)   |
| Constant                | -0.005<br>(-0.529)    | 0.350*<br>(1.898)     | 1.763*<br>(1.825)    | 0.004<br>(0.500)      | 0.380*<br>(1.838)     | 0.101<br>(0.195)     | 0.006<br>(0.399)     | 0.913**<br>(2.509)   | 0.558**<br>(2.511)   |
| Fixed Effects           | Yes                   | Yes                   | Yes                  | Yes                   | Yes                   | Yes                  | Yes                  | Yes                  | Yes                  |
| Clustered SE            | Yes                   | Yes                   | Yes                  | Yes                   | Yes                   | Yes                  | Yes                  | Yes                  | Yes                  |
| R-squared               | 0.061                 | 0.082                 | 0.086                | 0.051                 | 0.074                 | 0.076                | 0.058                | 0.100                | 0.092                |
| Observations            | 929                   | 863                   | 828                  | 852                   | 789                   | 775                  | 623                  | 568                  | 566                  |
| No. of countries        | 36                    | 36                    | 36                   | 36                    | 36                    | 36                   | 30                   | 30                   | 30                   |

Note: Standard error clustered at the country level. Robust standard errors in parentheses \*\*\*, \*\*, and \* represent statistically significant at 1, 5 and 10 percent respectively.

**Table 3.** Effect of vaccines on economic activity—alternative high-frequency economic indicators

| VARIABLES                                       | (1)<br>NO <sub>2</sub>  | (2)<br>NO <sub>2</sub>   | (3)<br>NO <sub>2</sub>  | (4)<br>NO <sub>2</sub>  | (5)<br>CO               | (6)<br>CO               | (7)<br>CO               | (8)<br>CO               | (9)<br>Mobility           | (10)<br>Mobility          | (11)<br>Mobility          | (12)<br>Mobility          |
|---|-------------------------|--------------------------|-------------------------|-------------------------|-------------------------|-------------------------|-------------------------|-------------------------|---------------------------|---------------------------|---------------------------|---------------------------|
| First dose per capita                           | 0.004539**<br>(0.002)   | 0.002492*<br>(0.001)     |                         | 0.004790***<br>(0.002)  | 0.000123<br>(0.001)     | -0.000001<br>(0.001)    |                         | 0.000273<br>(0.001)     | 0.070539<br>(0.114)       | -0.003033<br>(0.089)      |                           | 0.058095<br>(0.110)       |
| Second dose per capita                          |                         | 0.010261***<br>(0.003)   |                         |                         |                         | 0.000626<br>(0.001)     |                         |                         |                           | 0.379216**<br>(0.144)     |                           |                           |
| Surprises in vaccines administered (per capita) |                         |                          | 0.011232***<br>(0.002)  | 0.011086***<br>(0.002)  |                         |                         | 0.000538<br>(0.000)     | 0.000530<br>(0.000)     |                           |                           | 0.496498**<br>(0.217)     | 0.494948**<br>(0.216)     |
| COVID-19 cases per capita (lag)                 | 0.005300<br>(0.025)     | -0.017239<br>(0.021)     | 0.003334<br>(0.019)     | -0.023925<br>(0.023)    | 0.001749<br>(0.008)     | 0.000369<br>(0.008)     | 0.001265<br>(0.007)     | -0.000291<br>(0.008)    | 0.009952<br>(1.358)       | -0.832376<br>(1.163)      | -1.315359<br>(1.069)      | -1.647660<br>(1.445)      |
| NO <sub>2</sub> emissions per capita (lag)      | -0.554868***<br>(0.031) | -0.560258***<br>(0.030)  | -0.565083***<br>(0.033) | -0.566872***<br>(0.033) | 0.008407<br>(0.010)     | 0.008073<br>(0.010)     | 0.008540<br>(0.010)     | 0.008438<br>(0.010)     | 0.342440<br>(0.488)       | 0.154355<br>(0.416)       | 0.188923<br>(0.435)       | 0.167182<br>(0.427)       |
| CO emissions per capita (lag)                   | 0.019537<br>(0.044)     | 0.022281<br>(0.048)      | 0.018653<br>(0.046)     | 0.018753<br>(0.045)     | -0.516948***<br>(0.115) | -0.516781***<br>(0.115) | -0.508693***<br>(0.121) | -0.508687***<br>(0.120) | -0.086799<br>(0.992)      | 0.006510<br>(1.079)       | -0.139745<br>(0.986)      | -0.137757<br>(0.979)      |
| Containment measures (lag)                      | -0.228008<br>(0.144)    | -0.161003<br>(0.125)     | -0.197816<br>(0.119)    | -0.159762<br>(0.121)    | -0.065146<br>(0.044)    | -0.061008<br>(0.042)    | -0.068454<br>(0.046)    | -0.066262<br>(0.044)    | -50.95811***<br>(9.110)   | -48.48066***<br>(8.067)   | -49.04829***<br>(7.160)   | -48.57127***<br>(7.039)   |
| Mobility (lag)                                  | 0.001094<br>(0.001)     | 0.000755<br>(0.001)      | 0.000741<br>(0.001)     | 0.000713<br>(0.001)     | -0.000268<br>(0.000)    | -0.000289<br>(0.000)    | -0.000325<br>(0.000)    | -0.000327<br>(0.000)    | -0.595574***<br>(0.059)   | -0.608155***<br>(0.057)   | -0.619935***<br>(0.058)   | -0.620257***<br>(0.058)   |
| Constant  | -9.944917<br>(11.214)   | -38.42561***<br>(10.513) | 6.795432<br>(5.203)     | -6.379479<br>(6.577)    | 2.156221<br>(2.085)     | 0.419049<br>(1.855)     | 2.113492<br>(1.511)     | 1.363800<br>(2.304)     | -1151.16493*<br>(602.222) | -2212.384***<br>(798.360) | -765.8508***<br>(273.347) | -925.315016*<br>(459.661) |
| Observations                                    | 6,226                   | 6,226                    | 5,879                   | 5,879                   | 6,208                   | 6,208                   | 5,861                   | 5,861                   | 6,215                     | 6,215                     | 5,868                     | 5,868                     |
| R-squared                                       | 0.326                   | 0.330                    | 0.332                   | 0.333                   | 0.281                   | 0.281                   | 0.278                   | 0.278                   | 0.432                     | 0.437                     | 0.443                     | 0.443                     |
| Country FE                                      | Yes                     | Yes                      | Yes                     | Yes                     | Yes                     | Yes                     | Yes                     | Yes                     | Yes                       | Yes                       | Yes                       | Yes                       |
| Time FE   | Yes                     | Yes                      | Yes                     | Yes                     | Yes                     | Yes                     | Yes                     | Yes                     | Yes                       | Yes                       | Yes                       | Yes                       |
| Health controls and country-time trends         | Yes                     | Yes                      | Yes                     | Yes                     | Yes                     | Yes                     | Yes                     | Yes                     | Yes                       | Yes                       | Yes                       | Yes                       |
| No. of countries                                | 46                      | 46                       | 44                      | 44                      | 46                      | 46                      | 44                      | 44                      | 46                        | 46                        | 44                        | 44                        |

Note: Table reports results for equation (1). The dependent variable is NO<sub>2</sub> emissions per capita for columns 1-4, CO emissions per capital for columns 5-8 and change in retail and recreation mobility for columns 9-12. The regressions control for stringency of containment measures, other non-pharmaceutical interventions and health policy controls (one lag), lags of mobility (one lag), lagged new cases, (one lag), lagged NO<sub>2</sub> and CO emissions (one lag) country-specific time-trends, as well as country and time fixed-effects. Standard errors are clustered at the country level. \*\*\*, \*\*, and \* represent statistically significant at 1, 5 and 10 percent respectively.

**Table 4. Non-linear effects of vaccines on economic activity**

| VARIABLES  | (1)<br>NO <sub>2</sub> | (2)<br>NO <sub>2</sub> | (3)<br>NO <sub>2</sub> | (4)<br>NO <sub>2</sub> | (5)<br>NO <sub>2</sub> | (6)<br>NO <sub>2</sub> |
|--|------------------------|------------------------|------------------------|------------------------|------------------------|------------------------|
| First dose per capita  | -0.002795<br>(0.003)   | -0.000146<br>(0.003)   | 0.004753***<br>(0.001) |                        |                        |                        |
| First dose squared   | 0.000131*<br>(0.000)   | 0.000052<br>(0.000)    |                        |                        |                        |                        |
| Second dose per capita   |                        | 0.008875***<br>(0.003) | 0.000145<br>(0.003)    | 0.010812*<br>(0.006)   |                        |                        |
| Second dose squared  |                        |                        | 0.000214***<br>(0.000) |                        |                        |                        |
| Surprises in vaccines administered (per capita)                      |                        |                        |                        | -0.008556<br>(0.009)   | -0.008666<br>(0.010)   |                        |
| Second dose per capita * Surprises in vaccines administered          |                        |                        |                        | 0.000289**<br>(0.000)  |                        |                        |
| <b>Interaction with second dose quartiles (1st quartile omitted)</b> |                        |                        |                        |                        |                        |                        |
| 2nd Quartile of second doses administered * Surprises in vaccines    |                        |                        |                        |                        | 0.024510**<br>(0.011)  |                        |
| 3rd Quartile of second doses administered * Surprises in vaccines    |                        |                        |                        |                        | 0.025691**<br>(0.011)  |                        |
| 4th Quartile of second doses administered * Surprises in vaccines    |                        |                        |                        |                        | 0.019766*<br>(0.010)   |                        |
| Low second doses administered * Surprises in vaccines                |                        |                        |                        |                        |                        | -0.009003<br>(0.010)   |
| High second doses administered * Surprises in vaccines               |                        |                        |                        |                        |                        | 0.016742***<br>(0.004) |
| Observations   | 6,226                  | 6,226                  | 6,226                  | 5,879                  | 5,879                  | 5,879                  |
| R-squared  | 0.328                  | 0.330                  | 0.331                  | 0.335                  | 0.335                  | 0.333                  |
| Country FE   | Yes                    | Yes                    | Yes                    | Yes                    | Yes                    | Yes                    |
| Time FE  | Yes                    | Yes                    | Yes                    | Yes                    | Yes                    | Yes                    |
| No. of countries   | 46                     | 46                     | 46                     | 44                     | 44                     | 44                     |
| P-value F-test   |                        |                        |                        |                        |                        | 0.0578                 |

Note: Table reports results for the non-linear impact of vaccines on NO<sub>2</sub>. Columns 1 through 3 add additional terms for the square of the share of population that is vaccinated to the specification in equation (1). Column 4 through 6 test use different specification to test for interactions between the share of population fully vaccinated and the vaccine surprise variable. Column 4 uses a simple interaction term, column 5 is based on different quartiles of the vaccination rate (equation 2), while column 6 allows for interactions based on a smooth transition function. The regressions control for stringency of containment measures, other non-pharmaceutical interventions and health policy controls (one lag), lags of mobility (one lag), lagged new cases, (one lag), lagged NO<sub>2</sub> and CO emissions (one lag) country-specific time-trends, as well as country and time fixed-effects. Standard errors are clustered at the country level. \*\*\*, \*\*, and \* represent statistically significant at 1, 5 and 10 percent respectively.

**Table 5.** Effect of vaccines on economic activity—role of containment new cases

|  | (1)                    | (2)                    |
|--|------------------------|------------------------|
| VARIABLES  | NO <sub>2</sub>        | NO <sub>2</sub>        |
| Surprises in vaccines administered (per capita)                              | 0.014502***<br>(0.003) | 0.036355**<br>(0.014)  |
| <b>Interaction with Stringency Measures Quartiles (1st quartile omitted)</b> |                        |                        |
| 2nd Quartile of Containment Measures * Surprises in vaccines                 | -0.001964<br>(0.001)   |                        |
| 3rd Quartile of Containment Measures * Surprises in vaccines                 | -0.005628<br>(0.004)   |                        |
| 4th Quartile of Containment Measures * Surprises in vaccines                 | -0.012473**<br>(0.005) |                        |
| <b>Interaction with New Cases Quartiles (1st quartile omitted)</b>           |                        |                        |
| 2nd Quartile of New Cases * Surprises in vaccines                            |                        | -0.020599<br>(0.012)   |
| 3rd Quartile of New Cases * Surprises in vaccines                            |                        | -0.029437**<br>(0.014) |
| 4th Quartile of New Cases * Surprises in vaccines                            |                        | -0.026988*<br>(0.014)  |
| Observations   | 5,859                  | 5,859                  |
| R-squared  | 0.334                  | 0.335                  |
| Country FE   | Yes                    | Yes                    |
| Time FE  | Yes                    | Yes                    |
| Country-Time Trend   | Yes                    | Yes                    |
| No. of countries   | 44                     | 44                     |

Notes: Table reports results for equation 3. The dependent variable is change in NO<sub>2</sub> per capita in columns 1 and 2 and change in retail and recreational mobility in columns 3 and 4. The forecast error in vaccine rollout is interacted with the stringency of containment measures (categorized into four quartiles) in column 1 and 3. The forecast error in vaccine rollout is interacted with the level of new cases (moving average over seven days and also categorized into four quartiles) in column 2 and 4. The variables are lagged one day. All regressions control for stringency of containment measures and other non-pharmaceutical interventions, lagged mobility and NO<sub>2</sub> per capita, country specific time trends, as well as country and time fixed effects. Standard errors are clustered at the country level. \*\*\* p<0.01, \*\* p<0.05, \* p<0.1

**Table 6.** Effects of foreign new COVID-19 cases and vaccines on economic activity

|   | (1)                          | (2)                          | (3)                          |
|---|------------------------------|------------------------------|------------------------------|
|   | NO <sub>2</sub> (per capita) | NO <sub>2</sub> (per capita) | NO <sub>2</sub> (per capita) |
| Surprises in vaccines administered (per capita)           | 0.009579***<br>(0.002)       | 0.010250***<br>(0.003)       | 0.011306***<br>(0.002)       |
| Foreign new COVID-19 cases per capita (trade weighted)    | -37.319212**<br>(17.053)     |                              |                              |
| Foreign vaccines administered per capita (trade weighted) |                              |                              | 0.068932**<br>(0.028)        |
| US Vaccinations per capita (trade weighted)               |                              | 0.247082*<br>(0.126)         |                              |
| COVID-19 cases per capita (lag)                           | 0.026458<br>(0.016)          | 0.030142<br>(0.025)          | 0.014836<br>(0.020)          |
| NO <sub>2</sub> emissions per capita (lag)                | -0.568909***<br>(0.033)      | -0.550169***<br>(0.026)      | -0.566578***<br>(0.033)      |
| CO emissions per capita (lag)                             | 0.013661<br>(0.044)          | -0.010112<br>(0.030)         | 0.022937<br>(0.049)          |
| Containment measures (lag)                                | -0.180132<br>(0.141)         | -0.329187**<br>(0.136)       | -0.224757*<br>(0.131)        |
| Mobility (lag)  | 0.000825<br>(0.001)          | 0.000120<br>(0.001)          | 0.000774<br>(0.001)          |
|   | (0.020)                      | (0.021)                      | (0.022)                      |
| Constant  | 3.056202<br>(5.401)          | 9.155523<br>(10.212)         | -2.330700<br>(6.549)         |
| Observations  | 5,807                        | 4,606                        | 5,807                        |
| R-squared   | 0.334                        | 0.334                        | 0.333                        |
| Country FE  | Yes                          | Yes                          | Yes                          |
| Time FE   | Yes                          | Yes                          | Yes                          |
| Health controls and country-time trends                   | Yes                          | Yes                          | Yes                          |
| No. of countries  | 43                           | 42                           | 43                           |

Note: Table reports results for equation (4). The dependent variable is NO<sub>2</sub> emissions per capita. A spillover term (foreign COVID-19 cases/foreign vaccinations/US vaccinations) (lag 30 days) is introduced to the equation to alternately capture the effects of trading partners' COVID-19 new cases or vaccines on a country's economic activity using bilateral trade weights (equation 3). The regressions control for stringency of containment measures, other non-pharmaceutical interventions and health policy controls (one lag), lags of mobility (one lag), lagged new cases, (one lag), lagged NO<sub>2</sub> and CO emissions (one lag) country-specific time-trends, as well as country and time fixed-effects. Standard errors are clustered at the country level. \*\*\*, \*\*, and \* represent statistically significant at 1, 5 and 10 percent respectively.



14  
15  
16  
17  
18 **ANNEX**  
19  
20  
21  
22

23 **Annex Table A.1. Summary Statistics**

| 24 <b>Panel A: Summary Statistics for daily Time-Varying data</b>   |         |          |              |         |            |                 |                  |                    |
|---|---------|----------|--------------|---------|------------|-----------------|------------------|--------------------|
|   | 25 Obs. | 26 Mean  | 27 Std. Dev. | 28 Min  | 29 Max     | 30 Source       | 31 Starting Date | 32 N. of countries |
| 33 First dose per 100 inhabitants                                   | 23,257  | 13.26    | 17.73        | 0.00    | 116.15     | OWID            | 16-Dec-20        | 202                |
| 34 Second dose per 100 inhabitants                                  | 15,257  | 9.59     | 14.27        | 0.00    | 114.86     | OWID            | 27-Dec-20        | 180                |
| 35 Surprises in vaccines administered                               | 18,845  | -0.62    | 5.70         | -24.26  | 54.50      | Airfinity       | 27-Dec-20        | 182                |
| 36 COVID 19 cases per 100 inhabitants                               | 71,969  | 0.01     | 0.02         | 0.00    | 1.83       | JHU             | 23-Jan-20        | 205                |
| 37 NO2 per 1M inhabitants   | 31,529  | 1.37     | 3.42         | 0.00    | 66.84      | AqiCN           | 1-Jan-20         | 62                 |
| 38 CO per 1M inhabitants  | 27,828  | 0.54     | 1.51         | 0.00    | 25.73      | AqiCN           | 1-Jan-20         | 57                 |
| 39 Mobility   | 63,740  | -21.66   | 25.07        | -100.00 | 181.00     | Google          | 15-Feb-20        | 135                |
| 40 <b>Panel B: Summary Statistics for monthly Time-Varying data</b> |         |          |              |         |            |                 |                  |                    |
|   | 41 Obs  | 42 Mean  | 43 Std. Dev. | 44 Min  | 45 Max     | 46 Source       | 47 Date          | 48 N. of countries |
| 49 IP   | 1,115   | 3,058.62 | 21,972.43    | 10.94   | 238,183.40 | Haver Analytics | Jan-20           | 63                 |
| 50 PMI  | 990     | 50.29    | 7.58         | 20.68   | 72.80      | Haver Analytics | Jan-20           | 55                 |
| 51 CLI  | 663     | 97.86    | 3.46         | 64.75   | 103.59     | OECD            | Jan-20           | 39                 |
| 52 NO2  | 419     | 1.31     | 2.55         | 0.01    | 21.00      | AqiCN           | Dec-20           | 61                 |
| 53 CO   | 383     | 0.48     | 1.23         | 0.00    | 10.19      | AqiCN           | Dec-20           | 57                 |
| 54 Mobility   | 2,271   | -20.15   | 23.16        | -90.33  | 176.33     | Google          | 1-Feb            | 135                |

55  
56  
57  
58  
59  
60  
61  
62  
63  
64  
65

**Annex Table 2.** Bivariate regressions of vaccine surprises with various variables

| VARIABLES                                  | (1)                 | (2)                | (3)                 | (4)                 | (5)                  | (6)                  | (7)               | (8)               | (9)                | (10)               | (11)              | (12)              |
|--|---------------------|--------------------|---------------------|---------------------|----------------------|----------------------|-------------------|-------------------|--------------------|--------------------|-------------------|-------------------|
| New cases                                  | 14.6677<br>(16.078) |                    |                     |                     |                      |                      |                   |                   |                    |                    |                   |                   |
| Containment measures                       |                     | -4.7802<br>(5.014) |                     |                     |                      |                      |                   |                   |                    |                    |                   |                   |
| Confirmed vaccine procurement (cumulative) |                     |                    | 42.6610<br>(83.119) |                     |                      |                      |                   |                   |                    |                    |                   |                   |
| Potential vaccine procurement (cumulative) |                     |                    |                     | 25.5848<br>(80.705) |                      |                      |                   |                   |                    |                    |                   |                   |
| Confirmed vaccine procurement (new)        |                     |                    |                     |                     | -64.1929<br>(39.836) |                      |                   |                   |                    |                    |                   |                   |
| Potential vaccine procurement (new)        |                     |                    |                     |                     |                      | -55.4293<br>(39.495) |                   |                   |                    |                    |                   |                   |
| NO <sub>2</sub> (lag 1)                    |                     |                    |                     |                     |                      |                      | 0.0199<br>(0.040) |                   |                    |                    |                   |                   |
| NO <sub>2</sub> (lag 30)                   |                     |                    |                     |                     |                      |                      |                   | 0.0693<br>(0.068) |                    |                    |                   |                   |
| CO (lag 1)                                 |                     |                    |                     |                     |                      |                      |                   |                   | -0.0431<br>(0.048) |                    |                   |                   |
| CO (lag 30)                                |                     |                    |                     |                     |                      |                      |                   |                   |                    | -0.0293<br>(0.031) |                   |                   |
| Mobility (lag 1)                           |                     |                    |                     |                     |                      |                      |                   |                   |                    |                    | 0.0000<br>(0.001) |                   |
| Mobility (lag 30)                          |                     |                    |                     |                     |                      |                      |                   |                   |                    |                    |                   | 0.0036<br>(0.003) |
| Observations                               | 5,875               | 5,848              | 5,805               | 5,805               | 5,805                | 5,805                | 5,866             | 5,790             | 5,847              | 5,700              | 5,875             | 5,875             |
| R-squared                                  | 0.442               | 0.445              | 0.459               | 0.451               | 0.447                | 0.447                | 0.436             | 0.465             | 0.436              | 0.467              | 0.438             | 0.438             |
| Country FE                                 | Yes                 | Yes                | Yes                 | Yes                 | Yes                  | Yes                  | Yes               | Yes               | Yes                | Yes                | Yes               | Yes               |
| Time FE                                    | Yes                 | Yes                | Yes                 | Yes                 | Yes                  | Yes                  | Yes               | Yes               | Yes                | Yes                | Yes               | Yes               |
| No. of countries                           | 44                  | 44                 | 44                  | 44                  | 44                   | 44                   | 44                | 43                | 44                 | 44                 | 44                | 44                |

Note: Table reports results from regressing the vaccine surprise variable (difference between percent of population that is fully vaccinated and the expected share that will be fully vaccinated taken from Airfinity) on various variables. All regressions include country and time fixed effects. Standard errors are clustered at the country level. \*\*\*, \*\*, and \* represent statistically significant at 1, 5 and 10 percent respectively.

**Annex Table 3. Robustness checks—Instrumenting using vaccine surprises**

| VARIABLES  | (1)<br>NO <sub>2</sub> | (2)<br>CO              | (3)<br>Mobility        |
|--|------------------------|------------------------|------------------------|
| Second dose per capita<br>(instrumented with vaccine surprise) | 0.01141***<br>(0.002)  | 0.00062<br>(0.000)     | 0.51819*<br>(0.263)    |
| COVID-19 cases per capita (lag)                                | -0.00497<br>(0.019)    | 0.00239<br>(0.007)     | -1.72696<br>(1.232)    |
| NO <sub>2</sub> emissions per capita (lag)                     | -0.56732***<br>(0.032) | 0.00825<br>(0.010)     | 0.09591<br>(0.379)     |
| CO emissions per capita (lag)                                  | 0.01742<br>(0.048)     | -0.50816***<br>(0.121) | -0.22019<br>(1.062)    |
| Containment measures (lag)                                     | 0.00070<br>(0.001)     | -0.00033<br>(0.000)    | -0.61985***<br>(0.058) |
| Mobility (lag)   | -0.19556               | -0.07154               | -48.75752***           |
| Observations   | 5,909                  | 5,891                  | 5,898                  |
| R-squared  | 0.287                  | 0.258                  | 0.305                  |
| Country FE   | Yes                    | Yes                    | Yes                    |
| Time FE  | Yes                    | Yes                    | Yes                    |
| Health controls and country-time trends                        | Yes                    | Yes                    | Yes                    |
| No. of countries   | 44                     | 44                     | 44                     |

Notes: Table reports results for equation (1) but instruments for the share of fully vaccinated individuals with the vaccine surprise variable. The dependent variable is NO<sub>2</sub> emissions per capita for column 1, CO emissions per capital for column 2, and change in retail and recreation mobility for column 3. The regressions control for stringency of containment measures, other non-pharmaceutical interventions and health policy controls (1 lag), lags of mobility (1 lag), lagged new cases, (1 lag), lagged NO<sub>2</sub> and CO emissions (1 lag) country-specific time-trends, as well as country and time fixed-effects. Standard errors are clustered at the country level. \*\*\*, \*\*, and \* represent statistical significant at 1, 5 and 10 percent respectively.

**Annex Table 4. Robustness checks—Baseline using NO<sub>2</sub> emissions**

| VARIABLES                                       | (1)<br>1% winsorize     | (2)<br>drop late<br>start after March 1 | (3)<br>drop early<br>5% before Feb 1 | (4)<br>without<br>APD   | (5)<br>without<br>EUR   | (6)<br>without<br>MCD   | (7)<br>without<br>WHD   | (8)<br>without<br>AFR   |
|---|-------------------------|---|--------------------------------------|-------------------------|-------------------------|-------------------------|-------------------------|-------------------------|
| Surprises in vaccines administered (per capita) | 0.011918***<br>(0.003)  | 0.011192***<br>(0.002)                  | 0.008219***<br>(0.003)               | 0.010750***<br>(0.003)  | 0.008216**<br>(0.003)   | 0.010365***<br>(0.002)  | 0.012232***<br>(0.003)  | 0.011289***<br>(0.002)  |
| COVID-19 cases per capita (lag)                 | 0.004288<br>(0.019)     | 0.003674<br>(0.020)                     | -0.019220<br>(0.025)                 | 0.004979<br>(0.019)     | 0.020262<br>(0.019)     | 0.007671<br>(0.019)     | -0.007044<br>(0.021)    | 0.002204<br>(0.020)     |
| NO <sub>2</sub> emissions per capita (lag)      | -0.564944***<br>(0.033) | -0.565331***<br>(0.033)                 | -0.582338***<br>(0.035)              | -0.560856***<br>(0.037) | -0.606884***<br>(0.035) | -0.548998***<br>(0.034) | -0.567048***<br>(0.033) | -0.565005***<br>(0.033) |
| CO emissions per capita (lag)                   | 0.018059<br>(0.046)     | 0.018016<br>(0.046)                     | 0.008404<br>(0.050)                  | 0.020323<br>(0.046)     | 0.041983<br>(0.062)     | 0.016742<br>(0.100)     | 0.008033<br>(0.048)     | 0.017675<br>(0.046)     |
| Containment measures (lag)                      | -0.207061<br>(0.123)    | -0.229113*<br>(0.129)                   | -0.211049<br>(0.138)                 | -0.151022<br>(0.129)    | -0.354375**<br>(0.155)  | -0.130982<br>(0.128)    | -0.252608<br>(0.155)    | -0.203953<br>(0.122)    |
| Mobility (lag)                                  | 0.000842<br>(0.001)     | 0.000757<br>(0.001)                     | 0.000698<br>(0.001)                  | 0.000383<br>(0.001)     | 0.000399<br>(0.001)     | 0.001335**<br>(0.001)   | 0.000582<br>(0.001)     | 0.000699<br>(0.001)     |
| Constant  | 5.976847<br>(5.387)     | 6.610367<br>(5.448)                     | -62.995520***<br>(6.169)             | 8.405028<br>(5.249)     | -5.091505<br>(7.801)    | 11.078580**<br>(5.231)  | -5.697044<br>(8.123)    | 7.415563<br>(5.213)     |
| Observations                                    | 5,879                   | 5,624                                   | 5,158                                | 4,878                   | 2,629                   | 5,422                   | 4,823                   | 5,759                   |
| R-squared                                       | 0.332                   | 0.333                                   | 0.353                                | 0.341                   | 0.344                   | 0.340                   | 0.343                   | 0.333                   |
| Country FE                                      | Yes                     | Yes                                     | Yes                                  | Yes                     | Yes                     | Yes                     | Yes                     | Yes                     |
| Time FE   | Yes                     | Yes                                     | Yes                                  | Yes                     | Yes                     | Yes                     | Yes                     | Yes                     |
| Health controls and country-time trends         | Yes                     | Yes                                     | Yes                                  | Yes                     | Yes                     | Yes                     | Yes                     | Yes                     |
| No. of countries                                | 44                      | 41                                      | 39                                   | 34                      | 23                      | 40                      | 36                      | 43                      |

Note: Table reports results for equation (1). The dependent variable is NO<sub>2</sub> emissions per capita. The regressions control for stringency of containment measures, other non-pharmaceutical interventions and health policy controls (one lag), lags of mobility (one lag), lagged new cases, (one lag), lagged NO<sub>2</sub> and CO emissions (one lag) country-specific time-trends, as well as country and time fixed-effects. Standard errors are clustered at the country level. \*\*\*, \*\*, and \* represent statistically significant at 1, 5 and 10 percent respectively.

**Annex Table 5.** Non-linear effects of vaccines on economic activity using CO

| VARIABLES  | (1)<br>CO              | (2)<br>CO              | (3)<br>CO            | (4)<br>CO            | (5)<br>CO            | (6)<br>CO            |
|--|------------------------|------------------------|----------------------|----------------------|----------------------|----------------------|
| First dose per capita  | -0.001680**<br>(0.001) | -0.001771**<br>(0.001) | 0.000410<br>(0.001)  |                      |                      |                      |
| First dose squared   | 0.000032**<br>(0.000)  | 0.000035*<br>(0.000)   |                      |                      |                      |                      |
| Second dose per capita   |                        | -0.000303<br>(0.001)   | -0.001211<br>(0.002) | 0.001004<br>(0.002)  |                      |                      |
| Second dose squared  |                        |                        | 0.000039*<br>(0.000) |                      |                      |                      |
| Surprises in vaccines administered (per capita)                      |                        |                        |                      | -0.001468<br>(0.001) | -0.007415<br>(0.007) |                      |
| Second dose per capita * Surprises in vaccines administered          |                        |                        |                      | 0.000032<br>(0.000)  |                      |                      |
| <b>Interaction with second dose quartiles (1st quartile omitted)</b> |                        |                        |                      |                      |                      |                      |
| 2nd Quartile of second doses administered * Surprises in vaccines    |                        |                        |                      |                      | 0.008883<br>(0.006)  |                      |
| 3rd Quartile of second doses administered * Surprises in vaccines    |                        |                        |                      |                      | 0.009174<br>(0.007)  |                      |
| 4th Quartile of second doses administered * Surprises in vaccines    |                        |                        |                      |                      | 0.008483<br>(0.007)  |                      |
| Low second doses administered * Surprises in vaccines                |                        |                        |                      |                      |                      | -0.002158<br>(0.004) |
| High second doses administered * Surprises in vaccines               |                        |                        |                      |                      |                      | 0.001272<br>(0.001)  |
| Observations   | 6,208                  | 6,208                  | 6,208                | 5,861                | 5,861                | 5,861                |
| R-squared  | 0.282                  | 0.282                  | 0.281                | 0.278                | 0.280                | 0.278                |
| Country FE   | Yes                    | Yes                    | Yes                  | Yes                  | Yes                  | Yes                  |
| Time FE  | Yes                    | Yes                    | Yes                  | Yes                  | Yes                  | Yes                  |
| No. of countries   | 46                     | 46                     | 46                   | 44                   | 44                   | 44                   |
| P-value F-test   |                        |                        |                      |                      |                      | 0.513                |

Note: Table reports results for the non-linear impact of vaccines on CO. Columns 1 through 3 add additional terms for the square of the share of population that is vaccinated to the specification in equation (1). Column 4 through 6 test use different specification to test for interactions between the share of population fully vaccinated and the vaccine surprise variable. Column 4 uses a simple interaction term, column 5 is based on different quartiles of the vaccination rate (equation 2), while column 6 allows for interactions based on a smooth transition function. The regressions control for stringency of containment measures, other non-pharmaceutical interventions and health policy controls (one lag), lags of mobility (one lag), lagged new cases, (one lag), lagged NO2 and CO emissions (one lag) country-specific time-trends, as well as country and time fixed-effects. Standard errors are clustered at the country level. \*\*\*, \*\*, and \* represent statistically significant at 1, 5 and 10 percent respectively.

**Annex Table 6. Non-linear effects of vaccines on economic activity using mobility**

| VARIABLES  | (1)<br>Mobility      | (2)<br>Mobility       | (3)<br>Mobility     | (4)<br>Mobility     | (5)<br>Mobility      | (6)<br>Mobility        |
|--|----------------------|-----------------------|---------------------|---------------------|----------------------|------------------------|
| First dose per capita  | -0.208008<br>(0.138) | -0.111641<br>(0.164)  | 0.068691<br>(0.090) |                     |                      |                        |
| First dose squared   | 0.005015*<br>(0.003) | 0.002153<br>(0.003)   |                     |                     |                      |                        |
| Second dose per capita   |                      | 0.322693**<br>(0.160) | 0.060115<br>(0.270) | 0.128190<br>(0.208) |                      |                        |
| Second dose squared  |                      |                       | 0.006777<br>(0.004) |                     |                      |                        |
| Surprises in vaccines administered (per capita)                      |                      |                       |                     | 0.084600<br>(0.574) | 0.498283<br>(0.396)  |                        |
| Second dose per capita * Surprises in vaccines administered          |                      |                       |                     | 0.008895<br>(0.008) |                      |                        |
| <b>Interaction with second dose quartiles (1st quartile omitted)</b> |                      |                       |                     |                     |                      |                        |
| 2nd Quartile of second doses administered * Surprises in vaccines    |                      |                       |                     |                     | -0.298942<br>(0.505) |                        |
| 3rd Quartile of second doses administered * Surprises in vaccines    |                      |                       |                     |                     | -0.035946<br>(0.454) |                        |
| 4th Quartile of second doses administered * Surprises in vaccines    |                      |                       |                     |                     | 0.127307<br>(0.382)  |                        |
| Low second doses administered * Surprises in vaccines                |                      |                       |                     |                     |                      | -0.204844<br>(0.590)   |
| High second doses administered * Surprises in vaccines               |                      |                       |                     |                     |                      | 0.687222***<br>(0.175) |
| Observations   | 6,215                | 6,215                 | 6,215               | 5,868               | 5,868                | 5,868                  |
| R-squared  | 0.435                | 0.438                 | 0.439               | 0.444               | 0.444                | 0.444                  |
| Country FE   | Yes                  | Yes                   | Yes                 | Yes                 | Yes                  | Yes                    |
| Time FE  | Yes                  | Yes                   | Yes                 | Yes                 | Yes                  | Yes                    |
| No. of countries   | 46                   | 46                    | 46                  | 44                  | 44                   | 44                     |
| P-value F-test   |                      |                       |                     |                     |                      | 0.136                  |

Note: Table reports results for the non-linear impact of vaccines on retail and recreational mobility<sub>2</sub>. Columns 1 through 3 add additional terms for the square of the share of population that is vaccinated to the specification in equation (1). Column 4 through 6 test use different specification to test for interactions between the share of population fully vaccinated and the vaccine surprise variable. Column 4 uses a simple interaction term, column 5 is based on different quartiles of the vaccination rate (equation 2), while column 6 allows for interactions based on a smooth transition function. The regressions control for stringency of containment measures, other non-pharmaceutical interventions and health policy controls (one lag), lags of mobility (one lag), lagged new cases, (one lag), lagged NO2 and CO emissions (one lag) country-specific time-trends, as well as country and time fixed-effects. Standard errors are clustered at the country level. \*\*\*, \*\*, and \* represent statistically significant at 1, 5 and 10 percent respectively.

**Annex Table 7. Effect of vaccines—role of containment and new cases using CO and Mobility**

|  | (1)                  | (2)                  | (3)                    | (4)                    |
|--|----------------------|----------------------|------------------------|------------------------|
| VARIABLES  | CO                   | CO                   | Retail                 | Retail                 |
| Surprises in vaccines administered (per capita)                              | 0.000330<br>(0.001)  | 0.001720<br>(0.002)  | 0.717312***<br>(0.147) | 0.995808***<br>(0.367) |
| <b>Interaction with Stringency Measures Quartiles (1st quartile omitted)</b> |                      |                      |                        |                        |
| 2nd Quartile of Containment Measures * Surprises in vaccines                 | 0.000709<br>(0.000)  |                      | -0.191644<br>(0.131)   |                        |
| 3rd Quartile of Containment Measures * Surprises in vaccines                 | 0.000208<br>(0.001)  |                      | -0.431621**<br>(0.179) |                        |
| 4th Quartile of Containment Measures * Surprises in vaccines                 | -0.001011<br>(0.001) |                      | -0.384407*<br>(0.227)  |                        |
| <b>Interaction with New Cases Quartiles (1st quartile omitted)</b>           |                      |                      |                        |                        |
| 2nd Quartile of New Cases * Surprises in vaccines                            |                      | -0.001192<br>(0.002) |                        | -0.402936<br>(0.354)   |
| 3rd Quartile of New Cases * Surprises in vaccines                            |                      | -0.001486<br>(0.002) |                        | -0.513714<br>(0.382)   |
| 4th Quartile of New Cases * Surprises in vaccines                            |                      | -0.001395<br>(0.002) |                        | -0.440691<br>(0.350)   |
| Observations   | 5,861                | 5,861                | 5,839                  | 5,839                  |
| R-squared  | 0.278                | 0.278                | 0.449                  | 0.452                  |
| Country FE   | Yes                  | Yes                  | Yes                    | Yes                    |
| Time FE  | Yes                  | Yes                  | Yes                    | Yes                    |
| Country-Time Trend   | Yes                  | Yes                  | Yes                    | Yes                    |
| No. of countries   | 44                   | 44                   | 44                     | 44                     |

Notes: Table reports results for equation 3. The dependent variable is change in CO per capita in columns 1 and 2 and change in retail and recreational mobility in columns 3 and 4. The forecast error in vaccine rollout is interacted with the stringency of containment measures (categorized into four quartiles) in column 1 and 3. The forecast error in vaccine rollout is interacted with the level of new cases (moving average over seven days and also categorized into four quartiles) in column 2 and 4. The variables are lagged one day. All regressions control for stringency of containment measures and other non-pharmaceutical interventions, lagged mobility and NO<sub>2</sub> per capita, country specific time trends, as well as country and time fixed effects. Standard errors are clustered at the country level. \*\*\* p<0.01, \*\* p<0.05, \* p<0.1